

# THE SANDSPUR

[www.jltampa.org](http://www.jltampa.org) | WINTER 2011



**Mentoring Our Members**



**Loralee Koontz**  
JLT member & Physician Assistant

**Dr. Linda Flynn, M.D.**  
Board Certified Dermatologist

## YOUR DESTINATION FOR COMPREHENSIVE SKIN CARE.

The skin care professionals at South Tampa Dermatology have more than 25 years of combined experience in the Tampa Bay Area. Board certified dermatologist Linda Flynn, M.D. specializes in dermatologic surgery. Lorelee Koontz, PA-C, and Grace Rashae Doyle, PA-C, both specialize in medical and cosmetic dermatology.



**SOUTH ♦ TAMPA**  
**DERMATOLOGY**

**(813) 872-9551**  
2605 W. Swann Ave., Ste. 300  
Tampa, FL 33609

**BOTOX ♦ OBAGI ♦ SCULPTRA ♦ JUVEDERM ♦ CUTERA LASER**

# The Better Way to experience the season

The clock ticks. The sun rises. The temperature cools. Some things change. Some things do not. Crown Automotive strives to provide our customers with the best possible service every single time you visit a Crown dealership. Your satisfaction is our top priority.

In addition to the pride we take in our service, we are equally proud of the vehicles we sell. We invite you to visit us today to experience the exhilaration of accelerating through the seasons in a luxurious new Crown Acura, Audi, Jaguar or Mercedes-Benz. At Crown Automotive - The Better Way to Buy!



**CROWN**  
**AUTOMOTIVE | GROUP**

[www.CrownCars.com](http://www.CrownCars.com)

*The Better Way To Buy*

2012 Mercedes-Benz C250 Coupe  
MSRP from \$37,220



**ACURA**  
crownacura.com  
1.800.660.9689  
18911 US 19 North  
Clearwater, Florida 33764



**Audi**  
crownaudi.com  
1.866.526.0102  
18940 US 19 North  
Clearwater, Florida 33764



**JAGUAR**  
crownjaguar.com  
1.877.861.4296  
6001 34th St. North  
St. Petersburg, Florida 33714



**Mercedes-Benz**  
crownneurocars.com  
1.866.525.9064  
6001 34th St. North  
St. Petersburg, Florida 33714

# Attorneys Trust Our Trust Department



The local legal community continues to refer the vast majority of our new business, further developing our extensive relationships with Tampa Bay area attorneys.

Our Trust Officers have in-depth experience in all areas of trust services, including asset protection, estate planning, money management, tax strategies and business succession planning.

A local relationship over the long run is essential for effective trust service. If you are concerned about the preservation and distribution of your wealth, contact Mary Mitchell at 998-2720.



**The Bank of Tampa**  
TRUST DEPARTMENT

Locally connected - personally committed®

[www.bankoftampa.com](http://www.bankoftampa.com)

## THE SANDSPUR

### STAFF 2011 - 2012

<b>Editor</b> Angier Miller	<b>Assistant Editor</b> Cynthia Valdez
<b>Features Editor</b> Sarah Hall	<b>Photography Editor</b> Hilary Dalton Banks
<b>Advertising Coordinator</b> Lisa Humphrey	<b>Advertising Sales</b> Carmen Beavers Brooke Iarossi
<b>Contributing Writers</b>	
Ashley Collado Megan Ely Kathryn Hall Brooke Iarossi Brooke Palmer	Ellen Quinlan Jennifer Simpson-Oliver Sommer Stiles Meghan Weddle
<b>Placement Mentor</b> Tiffany Harrington	
<b>Design and Mechanical Layout</b> Sensory 5 <a href="http://www.sensory5.com">www.sensory5.com</a>	


### EXECUTIVE COMMITTEE 2011 - 2012

<b>President</b> Allison Barnes Burden	<b>President-Elect</b> Stephanie Wiendl
<b>Communications Vice President</b> Andrea Layne	<b>Community Vice President</b> Lee Lowry
<b>Finance Vice President</b> Heather Barrow	<b>Fund Development Vice President</b> Kathleen Thaxton
<b>Membership Vice President</b> Lynette Russell	<b>Secretary</b> Kim Carswell
<b>Treasurer</b> Jessica Kendall	

### COMMUNITY ADVISORY BOARD 2011 - 2012

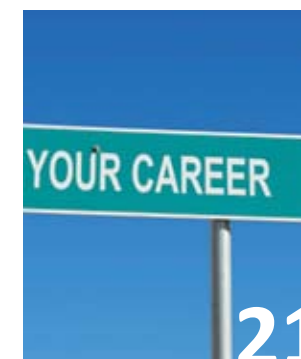
Sylvia Campbell, M.D. Jane Castor Joseph Clark Hosetta Coleman Sheff Crowder Bobbi Davis, Ph.D. Elizabeth Frazier Ken Gaughan, EdD John Giordano, Esq. Miray Holmes Ernest Hooper Elizabeth (Liz) Kennedy Christopher Lykes Cathy Lynch, M.D.	Winnie Magnon Marvel Dr. Brian McEwen The Honorable Ashley B. Moody Ronda Parag Amy Petrila Satura Shuman Smith Gayle Sierens Julie Smith Ian Smith Jonathan Stein Bronson Thayer Holly Tomlin Robbie Williams
--	--

THE SANDSPUR, the official magazine of The Junior League of Tampa is published four times a year.  
For advertising, please email: [sandspurads@jlthq.com](mailto:sandspurads@jlthq.com) or call (813) 254-1734

 The Junior League of Tampa  
87 Columbia Drive  
Tampa, FL 33606  
[www.jltampa.org](http://www.jltampa.org)



28



21



24



40

From the Editor ..... 7  
Advertisers Index..... 7  
President's Perspective..... 8  
Letters to the League..... 9  
Endowment Fund ..... 11  
2011 - 2012 Annual Campaign ..... 12  
Commemorative Gifts ..... 16  
Vice President's Column..... 18  
Women and Careers ..... 21  
Board Focus ..... 22  
Community Focus: Love Bundles..... 24  
Mentoring Our Members ..... 28  
Committee Focus: Training..... 37  
2011 - 2012 Provisional Members..... 40  
Out and About: Social..... 48  
Sustainer News..... 49  
Cookbook ..... 52  
Cookbook Order Form..... 53  
Annual Campaign Donor Form ..... 54  
Out and About: Community ..... 56  
The Last Post ..... 58

### On the Cover

2011 - 2012 Provisional Members at JLT Headquarters  
Photograph by Nicole Geller Photography



# Meet the Top 3

2011 Buick Regal

2011 Chevy Volt

2011 BMW 3-Series

U.S. News & World Report Best Upscale Mid-Size Cars\*

\* Reviews can be found online at [www.USNews.RankingsandReviews.com](http://www.USNews.RankingsandReviews.com)

FERMAN HAS PROUDLY SUPPORTED THE JUNIOR LEAGUE OF TAMPA FOR OVER 65 YEARS



Service, Selection and Value Since 1895.

Tampa  
Brandon  
Tarpon Springs  
Palm Harbor  
New Port Richey  
Wesley Chapel/  
Lutz Area

Acura | BMW | Buick | Chevrolet | Chrysler | Dodge | GMC | Jeep | Nissan  
Mazda | MINI | Ram | Volvo | Carfax 1-Owner *and* Certified Pre-Owned

Log on to [www.Ferman.com](http://www.Ferman.com) today for all your automotive needs.



The Association of Junior Leagues International, Inc. (AJLI) offers Leagues across the country a wealth of information and resources. I visited (its website) [www.ajli.com](http://www.ajli.com), in an effort to find some information regarding the theme of this *Sandspur*, Mentoring Our Members. AJLI encourages all Leagues to incorporate mentoring programs and clearly outlines various benefits:

- Development of a brain trust of highly capable and committed members, and of leaders skilled in strategic leadership, community building, relationship building, decision making and project management
- Heightened appreciation of diversity within the League and in the community
- Strengthened loyalty to the League
- Enhanced spirit of collaboration
- Improved continuity in projects and assignments

My hope is that this issue highlights how The Junior League of Tampa mentors its members and the positive impact this has in our own lives and the lives of so many members of the Tampa Bay community.

### The Winter Issue Highlights

- The Cover - The cover photo was taken by Nicole Geller. 150 very patient Provisionals and one very cooperative Provisional Chair, Suzy Mendleson, (front row, red top) braved the heat and glaring sun to make this first-ever group shot of Provisionals possible. To view the whole picture go to pages 40-41.



- Letters To The League – Hopefully the new format will make it a little easier to read all the wonderful things people in the community say about our League.



- The Final Post – Congratulations to the women cited in this issue's final post. Your mentoring clearly has made a difference in the lives of others.



- Meet *The Sandspur* Contributors – Throughout this issue, take a look at the pictures and brief bios of *The Sandspur* contributors. This is a great way to get to know our League members a little better.

### Thank You

I want to thank *The Sandspur* Committee for their input, collaboration and uplifting attitude towards this issue.

Happy Holidays!

*Angier J. Miller*

Angier J. Miller  
Editor, *The Sandspur*  
2011 - 2012

### Our Mission

Founded in 1926, The Junior League of Tampa, Inc. is an organization of 1,700 women committed to promoting voluntarism, developing the potential of women, and improving communities through effective action and leadership of trained volunteers. Its purpose is exclusively educational and charitable.

## ADVERTISERS INDEX

Academy of the Holy Names .....	17	Ideal Image .....	55
Bank of Tampa .....	4	JC's Boutique .....	55
Bella Bridesmaid .....	34	JC Elite Tennis .....	23
Berkeley Preparatory School .....	34	Lucky Dog .....	20
Canterbury Tower .....	48	Magnolia Organics .....	47
Carrollwood Day School .....	23	Medi-Weightloss Clinics.....	Back Cover
Celsius Marketing Interactive .....	35	Mortgage Consultant-Krista Allred .....	51
Cheese Please.....	55	Occasions.....	47
Christ the King Catholic School.....	47	Older Lundy & Weisman.....	26
Crown Automotive Group .....	3	Paci's Pizza .....	26
Cru Cellars .....	17	Pink Palm.....	50
D'Lites.....	22	St. John's Episcopal Parish DaySchool .....	27
Dale Mabry Animal Hospital.....	51	St. Joseph's Women's Hospital.....	Inside Back Cover
District Flooring .....	39	St. Mary's Episcopal Day School .....	51
Dr. John L. Redd II Dentistry.....	22	Seaside Home Accents and Gifts .....	23
Exceptional Professionals.....	38,39	South Tampa Dermatology.....	Inside Front Cover
Ferman .....	6	Spectra Wellness .....	46
Fit Life Foods .....	50	Tradewinds .....	50
Hillsborough Community College .....	10	US Ameribank.....	47
Hillsborough County Public Schools .....	46	Wright's Gourmet House.....	27



Throughout my 14 year Junior League career, I have had the opportunity to serve with many amazing and talented women. While our League placement process and training enabled me to learn how to perform many roles, it was truly learning from other dynamic women that had the greatest impact on my development. Many of these women are probably unaware of the impact they had on me, and consequently our organization and our community. The list of women that inspired and shaped my volunteer career is endless. However, I am proud to have the opportunity to publicly recognize ten of these women now.

I am specifically grateful to **Mary MacKeever Merryday** for "planting the seed" when she addressed my provisional class at our very first League meeting. She told us all that one of us would one day serve as President of the League. It was my privilege to share this same advice to this year's provisional class.

Thanks to **Nancy Harvey Mynard**, I received my first "phone call" to serve in a leadership position and then again to serve on The Junior League of Tampa's Board of Directors. I later learned how to effectively serve as a member of the Executive Committee under her leadership.

From **Susan Jackson Taulbee**, I learned the true meaning of fiduciary responsibility, as she taught me how to manage the League's budget and to question and research financial issues. This was a pivotal year in my understanding of financial nonprofit management.

Working with **Lisa Cave Andrews**, I was able to further develop my financial management skills, as together we made many of the operational decisions for the League. Thank you, Lisa, for your confidence in my work, despite my relative newness to the Board and the Executive Committee.

**Renee Hoffner Dabbs** taught me that good things come to those who wait. Her volunteer career advice assisted me with further developing a better rounded and more impactful League career.



From **Pamela Childers Divers**, I learned how to initiate a new project partnership. She supported my efforts with sound advice, while still allowing me the freedom to implement my ideas. And, she was my biggest cheerleader throughout the process.

Under the leadership of **Susan Lem Touchton**, I learned the importance of clearly articulating the League's community focus. Her efforts to better convey our focus areas still permeate every conversation and publication around the League's community impact.

**Jennifer Looney Johnson** taught me how to better balance all aspects of my life. Her ability to successfully serve as President of the League and to continue to succeed in her professional career demonstrates that Junior League women can do it all!

From **Jen Wilson Carlstedt**, I learned you must have fun while serving as President of the League! Her engaging smile and always positive attitude encouraged and motivated many League members to do their best and to enjoy the process along the way.

**Betsy Street Graham** modeled the true meaning of League stewardship. She consistently provided me with the tools, training and the numerous edits needed to accomplish any task, big or small. Throughout my expedited term as President-Elect, she continually served as a sounding board for ideas and plans.

As you continue your League career or external community volunteer efforts, always recognize and celebrate those mentors that assisted you with your development. It is never too late to thank those individuals that assisted with developing your fullest potential.

With Much Appreciation,

*Allison B. Burden*

Allison B. Burden  
President, 2011 - 2012

Allison Burden, Betsy Graham, Stephanie Wiendl, Jennifer Carlstedt and Susan Touchton.



**CHAIRSCHOLARS FOUNDATION**

In total, we have awarded 769 scholarships to young people with severe physical disabilities in 19 years – building a community where every person with a disability can achieve the education and employment necessary to live an independent and stable life. Your contribution to ChairScholars Foundation helped to make this all possible. We would like to thank you for everything that you do to support these deserving young people.

Carol Vick, Program Director  
ChairScholars Foundation, Inc.

**GLAZER CHILDREN'S MUSEUM**

I hope you heard of our acknowledgement by Women's Day Magazine as one of the 10 must-see children's museums in the U.S. We are very proud to be recognized nationally in less than one year since opening. We value this success and our efforts now are focused on continuous improvement and expanding on what we have achieved together. Your support and investment in our Museum is the corner stone of this success.

Al Najjar, President/CEO  
Glazer Children's Museum

**MEALS ON WHEELS**

The Hurricane Packs, which are vital to the growing number of homebound and seniors we serve in the event of a storm, are only made possible because of your generosity in the first place. Please pass along my thanks to all JLT'ers for the \$10,000 grant used to purchase the five shelf stable meals, water and other storm related items, and for them going the extra mile by providing the volunteers to deliver them! It's



**CHAIRSCHOLARS FOUNDATION**

always encouraging to me to see the many JLT families and individuals who give of themselves and serve our recipients that day.

Steve King, Executive Director  
Meals On Wheels of Tampa

**BIG BROTHERS BIG SISTERS**

Your support will allow us to Start Something BIG by continuing our mission to provide children facing adversity with strong and enduring, professionally supported 1-to-1 relationships that change their lives for the better. Statistics show children paired with a caring mentor will see an increase in their self-esteem, improvement in their grades and are less likely to get involved in the juvenile justice system. One of our Little Sisters in our program says it best, "My Big Sister has had a very positive influence in my life and I can't thank her enough for all that she has done for me."

De Anna Sheffield Ward, Chief Development Officer and VP of Partnership  
Big Brothers Big Sisters of Tampa Bay

**CONNECTED BY 25**

What an amazing sibling event! Thank you so very much for kicking off our year of events with such a well-planned, meaningful activity. I have heard nothing but wonderful reports from our youth. Thank you for all your hard work, dedication and planning. You can't even imagine the impact you are having. Thank you!

Sarah Hart, Program Coordinator  
Connected by 25



Dear Connected By 25 Committee,  
What an amazing sibling event! Thank you so very much for kicking off our year of events with such a well-planned, meaningful activity. I have heard nothing but wonderful reports from our youth. Thank you for all your hard work, dedication and planning. You can't even imagine the impact you are having. Thank you!  
Sincerely,  
Sarah Hart





**Think of us  
as the business partner  
you've always wished you had.**

For more than 40 years, Hillsborough Community College has helped Bay area businesses succeed in an ever-changing and increasingly global marketplace. From individualized business and leadership training to conferences, seminars, and certification courses, our programs are tailored to growing your business. Call now or visit [www.tampatraining.com](http://www.tampatraining.com) to learn the innovative ways your business and our college can become partners in taking you where you want to go. All the way to the top.

**Hillsborough Community College**  
The Institute for Corporate and Continuing Education

[www.tampatraining.com](http://www.tampatraining.com) 813-259-6010

The Junior League of Tampa Endowment Fund was established to ensure that our League is able to sustain financial stability and permanently pursue our Mission, despite possible changes in the economic climate or decreases in membership. A strong Endowment Fund will ensure a revenue stream that will augment, but not replace, the Annual Campaign, Holiday Gift Market, cookbook sales and membership dues. Our long-term goal is to raise \$500,000 or more, or "Hike to Half Million." Please consider joining the generous donors listed below by making an Endowment donation to ensure The Junior League of Tampa can "Sustain Our Service" into the future.

### *Endowment Fund Founders Circle*

#### *Legacy Founders*

The Junior League of Tampa  
Campbell and Don Burton  
The Community Foundation of Tampa Bay

#### *Sustaining Founders*

Betsy and Drew Graham  
Drs. Lance and Georgia Kane,  
*In memory of Kenneth Charles Kane*

#### *Founders*

Heather and Bennett Barrow  
Allison and Adam Burden,  
*In memory of Sandee Simpson Barnes  
and Jennifer Kay Barnes*  
Laurie Ann Burton  
Stacy and Bill Carlson  
Pat and Calvin Carter  
Mrs. George D. Curtis, Jr.  
Pamela C. and Brett D. Divers  
First Citrus Bank,  
*In honor of Jessica Kendall*  
Sally and Lewis H. Hill, III  
Jenay and Kevin Iurato  
Helen Kerr  
Ann Sells and David Miller  
Jennifer S. Moyer and M. Lance Tavana  
Terri D. Parnell  
Mary, David and Abigail Persky  
Stephanie and Stephen Rumbley  
Lavinia Witt Touchton,  
*In memory of Willie Carter Witt Blake*

#### *Benefactors*

Elizabeth and Brien Burkett

#### *Sponsors*

Betsy Best  
Hilary and Chuck Davis  
Tracie Domino  
Martha S. Ferman  
Leigh Kellett Fletcher,  
*In honor of Linda Kellett*  
Helen Gibbons  
Harrison and Tom Giddens  
Mary Catherine and Don Gould  
Laura and Clarke Hobby,  
*In honor of Robert R. and  
Lynda M. Vawter*  
Jennifer and D. Blaine Johnson  
Crystal and Kaivon Madani  
Julianne Cone McKeel,  
*In memory of Jean Ann Cone*  
Ann and John Sheppard,  
*In honor of Margaret Robson*  
Leslie Stauffer,  
*In honor of Jennifer Stauffer*  
Sarah Stichter  
Susan and John Touchton  
Nell Ward

#### *Contributors*

Rosann and Tom Creed  
Joanne H. Frazier  
Magnon Jewelers,  
*In memory of Martha Ferman*  
Joan and Larry Rayburn,  
*In honor of Lynda Vawter and  
Laura Hobby*

#### *Supporters*

Laurie and Tripp Barlow  
Ruth and John Giordano  
Mary Lou and Gary Gordon,  
*In memory of Evan R. Moss, Sr.*  
Mary Beth Hunt  
Andrea and Tom Layne,  
*In memory of Erie Mozelle Bridenback*  
Ann Evans Livingston,  
*In memory of Minnie May Evans  
Brown*  
Shantell and Dan McLean  
Kelley and Robert Merck  
Susannah O'Brien,  
*In memory of Martha Ferman*  
Marsha Otte  
Judy and Dick Reeves  
Julie Sargent  
Diana B. Shuler,  
*In memory of Valerie Brannon*  
Jennifer and Paul Sober,  
*In honor of Janet Johnson*

Donor List as of October 30, 2011. Donations less than \$250 are recognized through the Commemorative Fund.



Members of the Executive and Fundraising Committees at the at the Patrons' Party.

**PLATINUM SPONSORS**

Publix Super Markets Charities, Inc. ♦♦♦

**SILVER SPONSORS**

Accenture LLP♦  
The Bank of Tampa & Florida Investment Advisors♦♦♦  
Mary Lee Nunnally Farrior♦♦♦

**BRONZE SPONSORS**

The Barnes Family  
CAE USA Inc.♦♦  
Campbell and Don Burton♦♦  
Terrie Dodson and Mark Caldevilla♦♦  
Nordstrom♦  
Shumaker, Loop & Kendrick, LLP♦  
TECO Energy♦♦♦  
Danielle Dorothea Tinsley♦

**PATRONS**

Jay Annis, AGW Capital Advisors  
Erin and Jay Annis♦  
June and Michael Annis♦♦♦  
Baldwin Krysten Sherman Partners♦  
The Blunt Family♦  
Suzanne and Evan Brownstein♦  
Allison and Adam Burden♦♦♦  
Stacy and Bill Carlson♦♦  
Jen and Ed Carlstedt ♦♦  
Kim and Trey Carswell♦  
Lindsay Carter  
Betsy and Steve Chambers♦♦  
Sue and Frank Courtright♦♦  
Pam and Brett Divers♦♦♦  
Gretchen and Joe Dominguez♦  
Tracie Domino♦  
Jeanne Dowdle  
Megan Duffey and Ryan Butler / Carol Lybrand  
Duffey CPA, PA♦  
Tara and Drew Eckhoff♦♦  
Britt Erekson and Tye Blume♦  
Elizabeth Essex♦♦  
Laura and Preston Farrior♦♦♦  
Amber France ♦  
Mr. and Mrs. William Futch♦  
Greg and Jaime Girgenti♦  
Ruth and John Giordano♦♦♦  
Nicole Gitney♦  
Betsy and Drew Graham♦♦♦  
Kate and Michael Guilfoyle♦♦  
Gary and Margo Harrod ♦♦  
Sarah and Chad Harrod♦♦

Raymond and Michele Hintson♦  
Tara and Craig Hoss♦  
Nicole and Matt Hubbard♦  
Jenay and Kevin Iurato♦  
Molly and Robert James / Bella Bridesmaid♦  
Nina Jennings, Raymond James Financial♦♦  
D. Blaine and Jennifer Johnson♦♦  
Tabitha and Joshua Jones  
Aspen and Jake Kahl♦  
Jeff and Beth Kalicki♦  
Lance and Georgia Kane, C. Lance Kane, Dermatology♦♦  
Jessica Kendall / First Citrus Bank♦♦  
Barbara and Aydin Keskiner♦  
Loralee Koontz, PA-C of South Tampa Dermatology♦  
Suzanne and Jim Koutroubis♦♦  
Elizabeth Krystyn, Baldwin Krystyn Sherman Partners♦  
Mr. and Mrs. Michael Larsen♦♦  
Rayane Lawrence and Jay Plyler♦  
Chrisi and David Laxer♦♦  
Andrea and Tom Layne♦♦  
Kari and Steve Lennon♦♦  
Stephanie Leonard  
Valerie Lewis and Justin Kestner ♦  
Brita Wilkins Lincoln and Rocky Lincoln♦♦  
Lee and Lionel Lowry / First Hook.com♦♦  
The Lyman Family ♦  
Lynn & Associates Public Relations  
Crystal and Kaivon Madani♦  
Julianne Cone McKeel♦♦♦  
Suzy and Mark Mendelson♦  
Angier and Robert Miller♦  
Mr. and Mrs. David Monahan♦  
Harold Mullis, Jr., Trenam Kemker♦♦♦  
Nancy and Clay Mynard♦♦♦  
Nicole Geller Photography♦♦  
Suzanne and Roger Perry/Datz♦  
Raymond James Financial♦♦♦  
Regions Bank♦♦  
Stephen and Stephanie Rumbley, Bayshore Outfitters♦♦  
Lynette and Rick Russell♦♦  
Barbara and Les Ryals ♦♦♦  
Julie Sargent♦  
Angela and Juan Serrano ♦  
Ms. Denise D. Schultz♦  
Julia and Gil Smith♦  
Bronson and Stella Thayer ♦♦♦  
Susan and John Touchton♦♦♦  
Mr. and Mrs. Toledo, Toledo, PA♦  
Lisa and Michael Trentalange, Trentalange and Kelley, PA♦♦♦  
Heather and Jay Vermette♦

Nell Ward♦♦♦  
Heather Weber ♦  
Stephanie and Joe Wiendl♦♦  
Alyson and Robert Zamore♦  
Susan and Gary Zelenka♦

**CONTRIBUTORS**

Andrea and David Augustine♦  
Heather and Bennett Barrow♦♦  
Gina and Matt Barsema♦♦  
Roddy and Ralph Belfatti Jr.♦  
Megan Berrigan♦  
Wendy and Jonathan Brill ♦♦  
Bush Ross, P.A. ♦♦  
Christine and Mike Campo♦  
Ashley and Eric Carl♦♦  
Del and Rick Clarke ♦♦♦  
Sue and Don Cox ♦♦  
Chloe Cullinan♦  
Danielle Dennis and Michael Beattie♦  
Laura and Chris Donaldson♦  
Sara Evans♦  
Sarah G. and Duncan L. Evans♦  
Louise Ferguson♦♦♦  
Leigh Keller Fletcher♦  
Kimberly and Stephen French♦♦  
Nicole and Garrett Garcia♦  
Cristina and Travis Godwin♦♦  
Rachel and Jason Haman ♦♦  
Becky Ho  
Shellie Huffmaster  
Katina Markowski♦  
Julia N. Martinez♦  
Christina and Nick Matassini♦♦  
Scott and Elizabeth Meister ♦  
Laura and David Osterweil ♦  
Marsha Otte ♦♦  
Danielle and Kevin Post / Pool Guard of Tampa Bay♦  
Kelly and Darrell Smith♦  
Sarah Stichter♦♦♦  
Tim and Elaine Sweeney ♦♦

**FRIENDS**

Carolyn Andrews – Children’s Choice Therapy ♦  
Anton Castro Law♦  
Tee Ann Bailey ♦  
Laurie and Tripp Barlow♦♦  
Blair and Travis Bode♦  
Elaine and Russell Bogue♦♦  
Jane and Rick Bourkard♦  
Shannon and Stuart Brown♦  
Louise Burnett ♦♦  
Casey Carefoot♦

Jane and Haynes Carswell♦  
Becky and Ray Charles♦♦  
Karen Clarke♦♦♦  
Coberly Plastic Surgery and Med Spa ♦  
Cindy and Tony Coney♦♦♦  
Rosann and Tom Creed♦♦♦  
Stanton Cronin Law Group♦  
Colleen and Rees G. Crosby II♦  
Pat Daley♦♦♦  
Virginia Daniel♦  
Melissa Dempsey  
Mr. and Mrs. Miller Detrick ♦♦  
Kealoha and Justin Deutsch♦  
Krista Dietrich and Dietrich and Associates, Inc.♦  
Vicky Ellingson  
Laura Everitt♦  
Johanna Friedlander♦  
Tony and Christine Garrido  
Mr. and Mrs. John M. Garrity II♦  
Joyce and Michael Gerwe♦♦  
Laura Lee and Matthew Glass♦♦  
Mary Catherine and Don Gould♦♦♦  
Ansley and Jamie Graff♦  
Kellie and Mike Haber♦  
Stacy and Jeff Hahn♦♦  
Lauren G Hanley  
Sally and Jim Hardee♦♦♦  
Lon and Lou Hatton♦  
Sally and Lewis H. Hill, III ♦♦  
Michelle Hogan♦♦♦  
Jennifer and BG Holmberg♦  
Michelle Huffmaster  
Mary and Ron Hulse♦♦  
Mary Beth Hunt♦  
Jeff and Ellen James♦  
Julie Johnston  
Whitney and Jason Jones♦  
Lynn and Scott Kelyman - The Write Stuff♦♦  
Sarah and Ben Kodadek ♦♦  
Kelly Scaglione Lastra ♦♦  
Lagretta and Mark Lenker♦♦♦  
MarketingDirection.com and Christy Atlas-Vogel ♦♦♦  
Marlene Sundquist Maseman♦  
Wendi and Jeff McAleese♦♦  
Erika and Mike McCandless ♦♦  
Shantell and Dan McLean♦  
Jenn Moyer and Lance Tavana♦  
Mindy Murphy♦♦♦  
Lyris Newman♦♦♦  
Ms. Tiffany Newton  
Melissa and Patrick O’Connor♦  
Jenifer and T.J. Ownby♦♦  
Paige and Larry Paine ♦  
Sadies and Rob Pariseau♦  
Aly and Edward Peterson♦  
Heather Quinn  
Joan and Larry Rayburn ♦♦♦  
Steve, Clara, and Corey Reynolds♦♦

Jodi Rivera♦  
Gwyn and Mark Schabacker♦♦♦  
Mike and Caroline Smith♦  
Melissa Snively♦  
Stanton Law Group, Sean and Abby Cronin  
Jennifer and Marc Stauffer♦  
Jeness Steele and Scott Bostic  
Kathleen and David Thaxton♦♦  
Leila and Matthew Tooley♦  
Lynda M. Vawter♦♦  
Ginny Vickers♦♦  
Shannon Walsh♦  
Lauren and Shamus Warren ♦♦  
Sally and Hal Wiley ♦  
Stacy and Chris Williams♦  
Whitney and Kevin Woods♦  
Gwynne A. Young ♦  
Kathryn Zahn♦

**SUPPORTORS**

Angela M. Adamo♦  
Kelly Addison  
Lindsay Albright  
Krista and Brian Allred♦  
Ansley Alvarez  
Nina McGucken Alvarez  
Rosemary and Tim Anderson♦  
Nicole Andriso♦  
Melissa Arment♦  
Barbara B Armstrong  
Stefanie Astrab  
Catie Baker♦  
Courtney Baker  
Laura Baker♦  
Joanne M. Baldy♦  
Alexis Bankowski  
Dr. Hilary Dalton Banks  
Shelley Barger♦  
Danelle and Jody Barksdale♦♦  
Roia Barrios♦  
Carmen Beavers  
Andrea Becker  
Allison Belcher♦  
Carol and Guy Bennett♦  
Sarah Benson♦  
Katherine Bergole  
Nate and Ceci Berman♦  
Tara Coakley-Bernstein  
Lisa Bigelow♦  
Margaret Bock  
Gordon Bowker  
Marny Douglass Bowman  
Allison and Michael Brannigan♦♦  
Jennifer and Chris Branton  
Michelle and Jefferey Bremer♦  
Amanda Brzozowski♦  
Barrie Buenaventura♦♦  
Debra Buffington♦

Elizabeth Burkett♦  
Jessica Burns  
Jaymi Butler♦  
Julie and Bill Byrd♦  
Amy Cadicamo  
Jessica Campbell♦  
Laura and Mark Campbell  
Katie Cappy  
Kimberly Carberry  
Laura Carmen♦  
Ms. Anne Marie Carr  
Caroline Carson♦  
Margaret Cashill♦  
Denise and Thomas Cassedy♦  
Erin Cassidy  
Kelly Catoe♦  
Lauren Catoe♦  
Marlo Cervi♦  
Joanna and Robert Chapman♦  
Jeni and Frank Chatraw♦  
Casey Christopher♦  
Dr. and Mrs. David Ciesla♦  
Natalie and James Clark♦  
Carla Clarke♦  
Tracy and Mitch Clouser♦♦  
Jennifer Coleman  
Rachel Coleman♦  
Ashley Collado♦  
Erin Corcoran♦  
Stephanie Coren  
Sara Cooper♦  
Mr. And Mrs. Phillip Cusmano♦  
Cori Cuttler♦  
Laurie and Scott Daigle♦♦  
Tina Ann Dampf and Pietro Monfreda♦  
Stephanie and Ryan Daniels♦  
Kimberly and Todd Davis; Kimberly Davis - Arbonne International♦♦  
Annika DeCesare

Tammy B. Denbo  
 Katelyn Dervay  
 Isabel and John Dewey♦  
 Avery Dickey♦  
 Stacie Dickey♦  
 Kendall Dillon  
 Allison Domino  
 Jule Doran♦  
 Nicole and Kevin Dorr♦  
 Lindsay Dorrance♦  
 Allison Doucette  
 Trina Doussan  
 Taylor Dowdell  
 Shawna Doyle  
 Lisa and Bryan Dreisbach♦♦  
 Patricia C. Dwyer♦♦  
 Erin Eckhouse♦  
 Beth and Bart Edwards  
 Tanya Egger♦  
 Jennifer Esposito♦  
 Jennifer Faggion  
 Laura Fender♦  
 Lauren Fernandez♦  
 Karen Ferguson♦♦  
 Dana Flescher♦  
 Renee Figga  
 Joanna Finks  
 Staci and Graeme Fraser♦  
 Caroline Foss  
 Renee Friesz♦  
 Laura and Mike Frost♦♦  
 Cindi Funk  
 Dawn Gabriele  
 Meghan Gallagher  
 Courtney Geoghegan  
 Melissa and Joey Gelwix♦  
 Morgan Gibbons  
 Melissa Giunta♦  
 Amanda Gilmer♦  
 Amy Gomez  
 Ashley Gonzales  
 Alexandra Gracen♦  
 Jennifer Granger♦  
 Kristina Granger  
 Shannon and Lockwood Gray♦  
 Erin Greco  
 Shelby Gregory♦  
 Jennifer Grimsley  
 Jessica Grimsley♦  
 Danielle Groenen  
 Kristi Grooms♦  
 Paola Gruner♦  
 Ana Grygo  
 Nora Gunn♦

Sarah Hall  
 Heather Hamilton  
 Kimberly Hannah  
 Caroline Harnden  
 Stan and Frankie Harrell♦  
 Tiffany A Harrington♦  
 Katie Hart  
 Nicole Hasselbach♦  
 Courtney Haygood♦  
 Monica Helenek  
 Elizabeth Helmer  
 Heather Hernandez  
 Megan Hernandez  
 Lisa Hodgdon♦  
 Lindsey Hodges  
 Leslie Hodz♦  
 Kelly Holbrook♦  
 Marissa Holdorf♦  
 Bridgette and Chris Howell♦  
 Kelly Hughes  
 Jenn and Jeff Hunt♦♦  
 Kelly Moore Hunt  
 Brooke Iarossi  
 Elise and Ian Ippolito♦  
 Betsy Issak  
 Stacy Jarrard  
 Krisden and Pat Jernigan♦  
 Jess and Katie Johnson♦  
 Mary Johnson  
 LaShune Jordan- Organo Gold Coffee♦  
 Brooke Juan♦  
 Cathy and Grayson Kamm♦  
 Nichole Katulich  
 KiKi Kelatia♦  
 Dayton Kilburn  
 Jane King  
 Dr. Jasmine King  
 Lauri Kleman♦  
 Elizabeth Knieriem  
 Melissa Knight♦  
 Jillian Koepke  
 Megan Koval  
 Kristin Kraemer  
 Trista Krone♦  
 Erin and Jared Krukar♦  
 Heather and Dan Kutina  
 Malloy and Nathaniel Lacktman♦  
 Jamie LaRussa ♦  
 Deborah and Marcus Lawrence♦  
 Jenifer and Robert LeBeau♦  
 Erika and Scott Lee  
 Hallie Lee♦  
 Kelly Lee♦  
 Lisa-Marie and Nick Leihy♦

Ellis Lester  
 Mary Hall Lester♦  
 Stephanie Smith Leuthauser  
 Lauren Lewis♦  
 Mrs. Erika Lindsey  
 Courtney Loebel  
 Ashley Looney♦  
 Liana Lopez♦  
 Suzy Lopez♦  
 Read Maclay  
 Marla Madan  
 Christine Malpartida♦  
 Marcelite Manuel♦  
 Marissa Martin♦  
 Danielle Marone  
 Kayleigh Mataluni  
 Christen Mayer  
 Michelle Mayo♦  
 Denise McCaskill♦  
 Elizabeth McCollum  
 Beth and Mac McCraw♦  
 Amber Schonbrun McDonnell  
 Kristen McDowell♦  
 Deborah DeWeese McElfrick  
 Amy McClary McGucken♦  
 Meghan McGuire♦  
 Nicole McNally♦  
 Shannon McQuown  
 Lawrence and Tara McLaughlin♦  
 Lauren McQueen♦  
 Jacqueline Medina  
 Michelle Mendez  
 Gail Messamore♦  
 Annette Messina  
 Alison and Chris Meyer♦  
 Haley Miller♦  
 Marjory Miller  
 Megan Miller♦  
 Michael Miller  
 Jenn and Greg Millman♦  
 Michelle Mobley  
 Cherie Monarch  
 Leah and JR Morell  
 Kristen and Todd Morris♦  
 Merritt Mosley♦  
 Laurel Moynihan  
 Anne Myers  
 Elise Nelson  
 Angela Nidaso  
 Corinne Nikitas♦  
 Brad and Angela Norbom  
 Kate Novinski♦  
 Elizabeth Obendorfer♦  
 Gianni O'Connor♦

Jacqueline O'Connor  
 Pail And Jennifer Olson  
 Lori and Brian Osborne♦  
 Jenisse Ouellette  
 Kelli Pace  
 Chelsea and Otis Padgett♦  
 Terri D. Parnell♦  
 Amy Patenaude♦  
 Amber and Scott Peck♦  
 Sarah and Stephen Perron♦  
 Paula and Frank Perry♦♦  
 Cindy Peterson♦  
 Molly Phillips  
 Carolyn Piper♦  
 Nicole Polsky♦  
 Anita Pop♦  
 Emily Preston♦  
 Marissa Pupello  
 Ellen Quinlan  
 Sara Ragalie  
 Jill Reeves  
 Lisa Reeves  
 Morgan Reid  
 Brooks Reilly♦  
 Erin Reynolds  
 Susan Rickles♦  
 Lauren Rigby  
 Megan Rindone  
 Genevieve and John Neal Robinson♦  
 Ellen Romano♦  
 Alisha and Gantt Rorebeck♦  
 Andrea Rottensteiner♦  
 Dayna Russo  
 Rinku Savadas  
 LM Sawyer and Jerry Kerby♦  
 Julie Scalfaro♦  
 Amber Schaible  
 Krystal R. Schofield♦  
 Karry Schuele  
 Stephanie and Tony Schwindt  
 Erin Seaverson♦  
 Ann Sells♦  
 Amy Sharp  
 Jessica and Patrick Shea  
 Avril Sheldon  
 Katie Shelnut ♦  
 Taylour and David Shimkus♦  
 Taylor Shine  
 Jacqueline Simms-Petredis♦  
 Lea Simon  
 Amanda Cascotti Smith  
 Grace Smith♦  
 Elisha M. Snyder  
 Jennifer and Paul Sober♦♦

Julie Somonsen♦  
 Jenny and Peter Spencer♦  
 Laura Stevenson♦♦  
 Heather Stewart♦  
 Sommer Stiles♦  
 Shannon Strong♦  
 Julie Switzer  
 Donata Suplee  
 Upik Suwarno♦  
 Ashely and Christopher Swink  
 Kelly Swords♦  
 Susanna Martinez Tarokh and Jason Tarokh♦  
 Barbara Tesar  
 Christina Thompson♦  
 Elizabeth Thompson♦  
 Dawn Tiffin♦  
 Leslie Todd  
 Heather, Aaron and Noah Trkovsky♦  
 Diane Tweedy♦  
 Lisl and Daniel Unterholzer♦  
 Cynthia Valdez  
 Mandy and Doug Valenti♦  
 Margaret Vickers♦  
 Lisa Vodola  
 Caroline Vostrejs♦  
 Laine Walker  
 Michelle Walsh  
 Kimberly Walters♦  
 Sarah Walters♦  
 Sarah And Stephen Ward♦  
 Selena Ward  
 Elizabeth Watson♦  
 Citlin Weber  
 Jessica Weiss  
 Heather Werry♦  
 Mary Whalen♦  
 Lucy White  
 Meghan White♦  
 Emily Williams♦  
 Anne and David Williams♦  
 Helen Williams  
 Kristin Wilson♦  
 Loren Wilson  
 Lauren Withrow♦  
 Lizabeth Wolfe♦  
 Jennifer Wonder  
 Jamie Wood♦  
 Leah Wooten♦  
 Melissa and Pete Young♦

#### IN-KIND

Accenture LLP♦  
 Airheads Trampoline Arena  
 Michael and June Annis

Artistry Design  
 Be3tshirts  
 Bern's Fine Wines & Spirits♦  
 Celsius Marketing | Interactive♦♦  
 Datz Delicatessen & Wine Loft♦  
 Deborah Kents  
 Grand Events, LLC♦  
 IKEA  
 Kirbys Menswear  
 Magnon Jewelers, Inc.♦♦  
 Marissa Moss Photography ♦  
 Nicole Gellar Photography♦  
 PRP Wines  
 Puff 'n Stuff Catering  
 Safeway Parking Enterprises  
 South Tampa Dermatology♦  
 Torra Photography  
 ZYR Vodka  
 220 East

#### MEDIA PARTNERS

Clear Channel Communications – US 103.5 and Mix 100.7♦  
 St. Petersburg Times♦  
 Tampa Bay Metro♦  
 Tampa Bay Parenting♦

#### MATCHING GIFT COMPANIES

Carol Lybrand Duffey, CPA, PA  
 Daiichi Sankyo  
 Helios Education Foundation♦  
 JP Morgan Chase♦  
 Kimberly Clark Corporation♦♦  
 Merck Pharmaceuticals♦  
 MFS Investments♦  
 Microsoft Corporation  
 Saint-Gobain Corporation  
 Tampa Pallet  
 Tech Data Corporation

#### GRANTS AND OTHER RESTRICTED GIFTS

Eckerd Family Foundation♦  
 The Frank E. Duckwall Foundation♦  
 The Garcia Family Foundation  
 Hillsborough County Sheriff's Office Community  
 Enrichment Grant Program  
 Kristi and Brad Resch

#### MULTI-YEAR DONOR DESIGNATIONS

♦2-4 years at any level ♦♦5-9 years at any level  
 ♦♦♦= > 10 years at any level  
*Donor list as of October 31, 2011. If you believe your name has been omitted in error, please contact Fundraising Chair, Danielle Post, at postdanielle@yahoo.com.*



## COMMEMORATIVE GIFTS

A gift to the League's Commemorative Fund is a special way to honor a friend or family member's significant milestone or to remember a loved one. All commemorative contributions benefit the League's Endowment Fund.

### CELEBRATING THE BIRTH OF

**Penelope Jane Brownstein**, daughter of Active Suzanne and Evan Brownstein  
Tracie Domino  
Andrea Layne

**Claire Cathey**, daughter of Active Callie and Tyler Cathey  
Tracie Domino

**Parker William Coram**, son of Active Shannon Coram  
Betsy Graham  
Nicole and Matt Hubbard  
Lee Lowry  
Shannon Walsh

**Delaney Price Gelwix**, daughter of Active Melissa and Joey Gelwix  
Nicole and Matt Hubbard

**Baby Wade Hill**, son of Active Lindsey and Ed Hill  
Rosemary Anderson  
Chloe Cullinan

**Bennett Gabriel Lacktman**, son of Active Malloy Lacktman  
Allison Burden  
Kim and Trey Carswell  
Nicole and Matt Hubbard

**Graham Edward Sober**, son of Active Jennie Sober  
Heather Barrow  
Allison Burden  
Sarah G. Evans  
Betsy Graham  
Jessica Kendall  
Stephanie Wiendl  
Brita Wilkins Lincoln

### CELEBRATING THE BIRTHDAY OF

Active **Lauri Kleman**  
Colleen and Rees Crosby

Active **Christine Malpartida**  
Colleen and Rees Crosby

### CELEBRATING THE WEDDING OF

Active **Hannah Dewar to Paul Gross**  
Allison Burden  
Kim and Trey Carswell  
Chloe Cullinan  
Tracie Domino  
Jessica Kendall  
Andrea Layne  
Lynette and Rick Russell  
Stephanie Wiendl

Active **Alison and David Monahan**  
Heather Barrow  
Kim and Trey Carswell  
Jennifer Palacios Johnson  
Jessica Kendall  
Stephanie Wiendl

### IN HONOR OF

**Francis Poe Brawley III**, son of Patricia Brawley  
Kim and Trey Carswell  
Betsy Graham

Active **Stacy Carlson**, receiving her doctorate in Educational Leadership  
Allison Burden  
Sarah G. Evans  
Betsy Graham  
Jessica Kendall  
Lee Lowry  
Stephanie Wiendl

**Bryan Carlstedt**, son of Active Jen and Ed Carlstedt  
Heather Barrow  
Kim and Trey Carswell  
Laurie Daigle  
Jessica Kendall

**Charles Driggs Dominguez**, son of Active Gretchen and Joseph Dominguez  
Laurie Daigle  
Jessica Kendall  
Stephanie Wiendl

Active **Jessica Gilmore's baby bump**  
Marcelite Manuel  
Stephanie Wiendl

**Ansley Grace Hubbard**, daughter of Active Nicole and Matt Hubbard  
Laurie Daigle  
Jessica Kendall

### IN MEMORY OF

**Sarah Beville Wilhite**, mother of Active Wendy Brill  
Heather Barrow  
Allison Burden  
Kim and Trey Carswell  
Jessica Kendall  
Lee Lowry  
Lynette Russell  
Stephanie Wiendl

**Lt. Dimitri del Castillo**, killed in action  
Allison Burden  
Brigid and William Futch  
Stephanie Wiendl

**Martha Ferman**, Sustainer  
Gail and William Rinaldi  
Ann Sheppard  
Claudia and Bill Young

**Paulette Szabo Gross**, mother-in-law of Active Hannah Gross  
Nicole and Matt Hubbard

Brother of Active **Jenifer LeBeau**  
Laurie Daigle  
Laura Everitt

**Geraldine Train**, mother of Sustainer Campbell Burton  
Allison Burden



# ACADEMY OF THE HOLY NAMES

Discover YOUR Excellence



Now Accepting Applications for  
the 2012 - 2013 School Year

The Academy of the Holy Names is an independent, Catholic coeducational elementary school and college preparatory high school for young women, sponsored by the Sisters of the Holy Names of Jesus and Mary. Established in 1881, the Academy enrolls over 800 students in pre-kindergarten through 12th grade. We welcome students of all faiths who seek an education enhanced with a commitment to serve others.



Learn more about AHN

3319 Bayshore Boulevard • Tampa, Florida 33629 • 813.839.5371 • www.holynamestpa.org



# CRU CELLARS

small-production wines | 50 wines under \$13 | wine and cheese flights | open 5 nights a week  
2506 S. MacDill Ave. 813.831.1117 www.cru cellarstampa.com

# Mentoring Our Members

by Lynette Russell  
Membership Vice President



**T**raining has been a cornerstone of The Junior League since its inception in 1901. Founding member Mary Harriman knew that it was not enough to WANT to do good; you needed to know HOW. Therefore, one of the first initiatives of The Junior League was an education program that quickly evolved into a more practical, skills-based training program. She brought in experts to provide lectures and instruction to the members and quickly realized with better preparation came greater engagement, ultimately leading to increased interest in membership. This Mission-based training continues today being the driving force for our League.

### The Mission Of The Junior League Of Tampa

Founded in 1926, The Junior League of Tampa, Inc. is an organization of over 1,700 women committed to promoting voluntarism, developing the potential of women and improving communities through effective action and leadership of trained volunteers. Its purpose is exclusively educational and charitable.



### How We Train Our Members

Training begins with the provisional curriculum, which is reviewed and updated every year. We share the League's past, present and future with these new members, while orienting them to the culture of our organization, as well as the responsibilities and privileges of membership. Additionally, new Transfers are encouraged to attend the provisional education meetings to learn about The Junior League of Tampa. By giving one of the largest provisional classes in The Junior League of Tampa's history the knowledge, tools and motivation, we are sure they will become the most engaged and best equipped volunteers they can be!



Another training initiative established in recent years, focuses on the importance of mentoring. The development of the Placement, Provisional and Transfer Mentor Programs has allowed our Membership to grow individually, and as a group. This dedicated group of Mentors is provided with special training from an external consultant, so they can ensure our members have a quality experience throughout the year. The Mentors focus on getting to know each member personally and strive to enhance the education and experience for these women. The Mentors also oversee our TLC (The League Cares) Initiative, which provides a way for the League to recognize an individual member's accomplishments, accommodations and exciting news. Furthermore, it allows us to support each other in times of need or distress.



Training is the basic premise of The Junior League's Placement and Willingness to Lead processes, which allow our members to change committees and responsibilities each year. Members are annually provided

the ability to learn new things, select their level of time commitment and meet new people. The diverse paths of placement offer women the opportunity to personalize their experience and training each and every year. From choosing Administrative, Fundraising or Project committees to participating as a committee member, a coordinator position or at Board level, there is something for everyone!

### What's New

#### Training Requirement

As the League continues to grow in size and community impact, we have seen opportunities to increase the educational opportunities for our members. This year we implemented a new training requirement that states each active and provisional member must attend one training event for the year. This is an amazing opportunity for the Membership to become educated on many different topics. The Training Committee will be hosting monthly events on subjects like Resume Writing, Fundraising 101, Book Clubs on Breast Cancer Awareness and Civic Leadership, just to name a few. These events will be fun and educational, and promise to have something for everyone.

#### Formal Mentoring

Member education is a priority at the committee level, as well. The Committee Chairs are responsible for setting goals and giving their members the tools and training to accomplish them. Additionally, the Placement Mentors are involved by speaking about different League topics, such as "Getting the Most From GMM's", "Creating your Elevator Speech" and more. This new committee focused training allows more members to learn more about the League in a smaller setting.

#### Informal Mentorship Program

Another new membership-driven initiative is the development of a League-wide Informal Mentorship Program by the Training Committee. The committee is seeking information from all members about their knowledge, experiences and interest, and then will match them up based on the responses. This will allow our members to interact with each other based on commonalities. This initiative also has the potential for collaborative growth throughout the League.

#### Nonprofit Leadership Center Training

The League is working with the Nonprofit Leadership Center of Tampa Bay to bring professional training events to our members. This new partnership will give us the tools to take our training to a higher level and offer our Membership skills that can be utilized in the League, in the workplace and, ultimately, the community.



The training that The Junior League of Tampa members receive as a core component of their membership strengthens communities and families around the Bay area and beyond, touching countless hearts and improving the quality of innumerable lives. Training to provide the know-how to do good – it is what the Junior League is all about.



# training

[train • ing] n.

**Organized activity aimed at imparting information and/or instructions to improve the recipient's performance or to help him or her attain a required level of knowledge or skill.**

# Visions of LUCKY DOG

Daycare & Resort of South Tampa

## danced in her head!

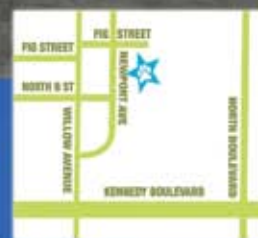
Boarding • Daycare • Grooming Spa  
and Obedience Training



MENTION THIS AD FOR  
5 FREE DAYS OF DAYCARE



311 N. Newport Ave | Tampa, Florida 33606  
813.258.DOGS (3647) | info@luckydogtampa.com  
[www.LuckyDogTampa.com](http://www.LuckyDogTampa.com)



by Sommer Stiles

Public relations, event planning, management, nonprofit development, sales, graphic design, culinary arts and journalism. This list may sound like areas of study from an academic course guide, but it is no such thing. This list represents just a few of the professions available through The Junior League of Tampa.

The League offers members at all levels – Provisional, Active, and Sustainer – the opportunity to develop skill sets in a variety of areas. Perhaps you are in the early stages of your fundraising career and are looking to gain additional experience outside your place of employment. A natural choice would be a fund development placement working on a committee such as Cookbook, Fundraising or Holiday Gift Market, where you could exercise your knowledge of fundraising best practices. Conversely, let's say you have worked ten years in a profession or out of a professional office environment, for that matter, and wish to make a transition to a new field like event planning. You have planned several successful events for your family and friends and are now ready to take your interests to the next level. Then a placement on the Arrangements or Social Committee, for instance, would provide you with opportunities to realize your event planning potential. The opportunities are yours for the taking – you just have to take them.

As a young provisional (okay, well, maybe not so young), a fellow League member once told me “the League is like anything in your life, the more you put into it...the more you will get out of it.” These words have remained in my memory and continue to motivate me to seek new opportunities for personal and professional growth within the League. Though I am not a professional journalist, I greatly enjoy writing and was eager to put pen to paper through a placement on *The Sandspur*. Gratefully, I have been encouraged to contribute to several issues over the past year. Each article has provided me with the unique opportunity to explore an area I am passionate about, learn how to communicate the message effectively and creatively, and further develop as a writer. Should I have not volunteered for a single article, what would I have gained?

In thinking of the topic “How to turn your League placement into a career?,” I decided to look beyond my own experience and reach out to women throughout the League to learn their answers. Many similar responses were given, all perhaps best encapsulated in one statement given by Isabel Dominicis Dewey, The Junior League of Tampa Training Chair and the Public Affairs, SPAC Chair. When I posed this question to Isabel, she responded with sage advice “...do things that [you] are passionate about and help grow [your] potential. Although I’m out of the political arena, I still have a strong interest in public affairs and shaping public policy. My career has taken me away from that, but I have been able to feed my interest through my advocacy work in the League. I have forged relationships with elected officials and policy makers that would have been impossible without the League. Even though I am happy where I am professionally, if I return to politics, I will be reaching out to colleagues I met through the State Public Affairs Committee of the Junior Leagues of Florida.”

## HOW WILL YOU FEED YOUR INTEREST?

That being said I suppose the only question that remains is when looking at The Junior League of Tampa academic course guide (more commonly known as the Willingness to Lead and General Placement brochures) what career path will you choose? How will you feed your interest?



*Sommer Stiles has been a member of the Junior League of Tampa since 2009. Sommer is a graduate of The University of Florida and has her Masters from The University of Central Florida. She and her husband, Henry, live in South Tampa. Sommer is the Proprietress and Creative Director of Paper Anniversary Co., an online stationery boutique and design studio.*

MEET YOUR MEMBERS AT LARGE



Nicole Geller, Kealoha Deutsch and Megan Duffey.

The Members at Large are three women elected by the membership to represent their interests by serving on the Board of Directors. Their responsibilities include: recognizing outstanding members with the ProActive of the Month awards; spotlighting deserving committees; organizing a JLT Girl's Getaway; honoring participants in the Susan G. Komen Foundation Race for the Cure and Breast Cancer 3-Day Events; honoring outstanding Board members with the annual Inspiring Leader Award; and recognizing members who earned perfect attendance at the General Membership Meetings. Serving as a Member at Large offers multiple ways to mentor and train.

This year's Members at Large are:

**Nicole Geller**, a Tampa native who grew up in Carrollwood. She now lives in South Tampa with her husband, David, their two sons and their dog, Carl. Nicole owns her own photography company and loves to train for triathlons. She volunteers with the JLT and at her children's school.

**Kealoha Deutsch**, a Tampa native, who, at anytime, can be found either teaching a "BodyAttack" class at Lifestyle Family Fitness, designing and developing medical devices, or spending quality time with her husband and local family (when she's not volunteering within the League, of course). She holds a strong passion for our membership and the community in which we live, work and serve.

**Megan Duffey**, a USF graduate who is a lifelong volunteer. Her first volunteer efforts began as a pre-schooler alongside her parents. She currently works in the non-profit field, serves on the Florida Bar's Unlicensed Practice of Law 13B Committee and spends her free time as a local and state political volunteer, playing various sports such as soccer, softball and tennis or volunteering with other local nonprofits.



Ice Cream  
With A  
Healthy  
Twist



4 Tampa Bay-Area  
Locations  
TampaBayDLites.com



CARROLLWOOD  
DAY SCHOOL  
*Education with Character*



Wishing you & your family  
*Peace and Joy!*

6th School in U.S.  
authorized to offer  
all three IB programmes!



FOR A PRIVATE TOUR CALL 813.920.2288 TODAY!

Visit us at [www.CarrollwoodDaySchool.org](http://www.CarrollwoodDaySchool.org)

an International Baccalaureate School - Preschool through High School

Bearss Avenue Campus | 1515 W. Bearss Ave. | Tampa, FL 33613 | 813.920.2288

Early Childhood Campus | 12606 Casey Road | Tampa, FL 33618 | 813.963.2388

Accredited by FCIS, FKC, IBO, SACS and NAEYC



**DR. JOHN L. REDD II**  
Cosmetic • Implant • General  
**Dentistry**  
of Tampa Bay

Call today for compassionate,  
technologically-advanced dentistry.

813-253-0209

[www.tampasmiles.com](http://www.tampasmiles.com)

907 West Platt Street Tampa, Florida 33606

*Your Smile... Your Choice*

**JC Elite Tennis**

*"Bringing Tennis To Your Community"*

**WE OFFER THE FOLLOWING:**

**Bright Future Tennis Stars (Pre - K),  
After School, Private and Group Lessons  
and Other Individualized Programs.**

**Early Development  
Kids, Teenagers and Adults**

**Offered by Mr. Jonathan Collazo  
Former U.S.F. Assistant Tennis Coach**



813.365.0035

[jelitetennisoftampa@yahoo.com](mailto:jelitetennisoftampa@yahoo.com)

[www.jelitetennis.com](http://www.jelitetennis.com)

*Seaside* Home Accents  
& Gifts

Furniture, Candles,  
Pillows, Vases, Frames  
and more...



Visit us at

1902 S. MacDill Ave. • Tampa, FL 33629 • 813.839.4544  
corner of Angeles and MacDill



# Love Bundles

**The Love Bundles Committee provided a total of 1,400 backpacks to its three community partners last year.**

by Jennifer Oliver -Simpson

**A** 10 year old boy walks sheepishly into Mary Lee's House. A Hillsborough County Sheriff's deputy picked him up from his home in the middle of the night in response to a call of child abuse and neglect. The boy walks in and looks around at all of the strange surroundings and people; he is scared. He does not know why he has been taken from his home, but he knows his father is not in this place and cannot hurt him here. The kind staff of Mary Lee's House presents him with a Love Bundle from The Junior League of Tampa. In it, he finds a clean change of clothes, socks, a book and a snack. Once he sees all that the backpack contains, he gestures to give it back to the nice woman who gave it to him. But she explains that the backpack is his. He hugs it close to his chest. And he smiles just a little.



*Stephanie Wiendl and Lee Lowry being recognized by Captain Rick Hernandez of the Hillsborough County Sheriff's Department, for the League's work with Love Bundles.*

It is a familiar and sad story. During this tumultuous time, children often feel scared and uncertain. They have lost all they know to be "normal." Hillsborough County has the highest rate of domestic violence and abuse in the state of Florida. As a result, many children are removed from their homes every day. Many of the families do not know how to take care of themselves, let alone a child. In an effort to aid in the transition process and provide a little piece of comfort to these boys and girls, The Junior League of Tampa offers "Love Bundles."

County Sheriff's Department. Lisa Gabler, Chair of Love Bundles in 2004, says that the goal of Love Bundles is to provide backpacks, or "bundles" to children, newborn to 17, removed from their home due to calls to the Department of Children and Families reporting abuse or neglect. The children are picked up by the Sheriff and taken to either Mary Lee's House, the Children's Home Society or taken back to the Sheriff's Office. From there, the child is placed with another family, or sent into foster care. In the first year of the project, Lisa and her committee would spend countless hours shopping and individually assembling the backpacks. But they thought of a more

efficient way to stock the backpacks, so that the partners would have what they needed each month. The committee started an assembly-line type of packing and, eventually, was able to stock the backpacks for the partners so that each month, they would have the supplies they needed, and would not be waiting until they were in desperate need to assemble the committee to restock.

Today, it is largely done the same way. On the third Tuesday of each month, the committee gathers to put together the backpacks and supplies based on the lists sent in by the partners. Each month, the needs primarily revolve around 50% boys and 50% girls, ages newborn to five years old. Based on these needs, the committee shops around the area for supplies, including toiletries, clothes, socks, a snack (or formula for babies) and a book or toy for all of the ages. Additionally, Love Bundles provides non-perishable food, such as Chef Boyardee meals, cereal, granola bars and fruit bars, and for older children the bundles include things like lip-gloss, nail polish, puzzle books, yo-yo's and decks of cards. The Love Bundles Committee ensures that the children they serve are provided with age-appropriate items and hopefully a little comfort. Ginny Daniel, current Chair of Love Bundles, says the committee provides the necessities for the first 24 hours after the child is removed from the home, and also adds an extra something such as a toy or a book to call their own during this tumultuous time. According to Ginny the backpack is "comforting for the first 24 hours when they are alone and scared and are not sure where they will end up."

Overall, Love Bundles bring more than just necessities to children that are removed from their homes for abuse or neglect. They provide these kids with something that brings them some comfort and joy during a time that is unimaginable for most of us. Each



*Members of the Love Bundles Committee prepare backpacks.*

month, the volunteers help to deliver the backpacks and supplies to each partner. Committee members pack 200-300 backpacks each month from September through June. In June, the committee packs enough for the partners to sustain over the summer until the following September. The Love Bundles Committee provided a total of 1,400 backpacks to its three community partners last year.



*Jennifer (Jenna) Simpson-Oliver joined The Junior League of Tampa in 2009. She and her husband Thomas live in St. Petersburg and Jenna is an Attorney at Broad and Cassel in Tampa.*

(813) 253.2973

# Paci's Pizza

A Little Slice of Brooklyn<sup>SM</sup>



A little slice of Brooklyn

**813.253.2973**



Margherita Pie

Authentic New York pizza pies, rolls and calzones all hand tossed and cooked to NY standards in a deck oven. Dough and sauce made in house - no pre-bought or pre-made junk touches our pies.

**Hours**

Monday - Thursday  
5:00 p.m. - 9:00 p.m.

Friday & Saturday  
5:00 p.m. - 10:00 p.m.

Mention this ad and we will donate 5% of your purchase (excluding tax) back to The Junior League of Tampa.

**Come Visit Us!** We are located across the street from Plant High School, in San Miguel Plaza, 2307 South Dale Mabry Highway • Tampa, FL 33629 • [www.pacispizza.com](http://www.pacispizza.com)

Awarded

# BEST EDUCATION IN THE CITY OF TAMPA

FIRST PLACE - SOUTH/CENTRAL TAMPA - PRIVATE SCHOOLS - TAMPA TRIBUNE



A Superior Educational Experience  
in a Nurturing Christian Environment

Accelerated K(4) - 8th Grade



Cindy M. Fenlon  
Director of Admissions

(813) 600-4348  
[www.stjohnseagles.org](http://www.stjohnseagles.org)

906 South Orleans Ave  
Tampa, Florida 33606

# Older Lundy & Weisman

TRADITIONAL VALUES / INNOVATIVE APPROACH



**Michael Lundy**  
Founding Partner  
Marital & Family Law



**Benjamin Older**  
Founding Partner  
Marital & Family Law



**Gary Weisman**  
Partner  
Personal Injury



**Jessica Felix**  
Partner  
Marital & Family Law  
Active JLT member

## Family Law / Personal Injury

Junior League members do not pay a consultation fee

3014 West Palmira Avenue | Suite 301 | Tampa | P 813.254.8998 | F 813.839.4411 | [www.olwlaw.com](http://www.olwlaw.com)

## DISTRICT FLOORING & RESTORATION

- Specializing in:
- Natural Stone
  - Porcelain Tile
  - Ceramic Tile
  - Hardwood (Engineered & Solid)
  - Hardwood Refinishing
  - Waterproofing
  - Custom Staircases
  - Vinyl Plank
  - Laminate
  - Carpet
  - Rugs



Let us help you transform your home or office into a gorgeous and stylish showpiece.

Contact **Will Lifsey** at 813.690.1324 (c) or 813.254.3495 (o)  
500 N. Willow Ave. | Suite 104 | Tampa, FL 33606



# Wright's Gourmet House

CAFE ♦ DELI ♦ CATERER

From Our Family To Yours Since 1963

1200 S. Dale Mabry Hwy  
Tampa, FL 33629

(813) 253-3838

Fax (813) 251-0143

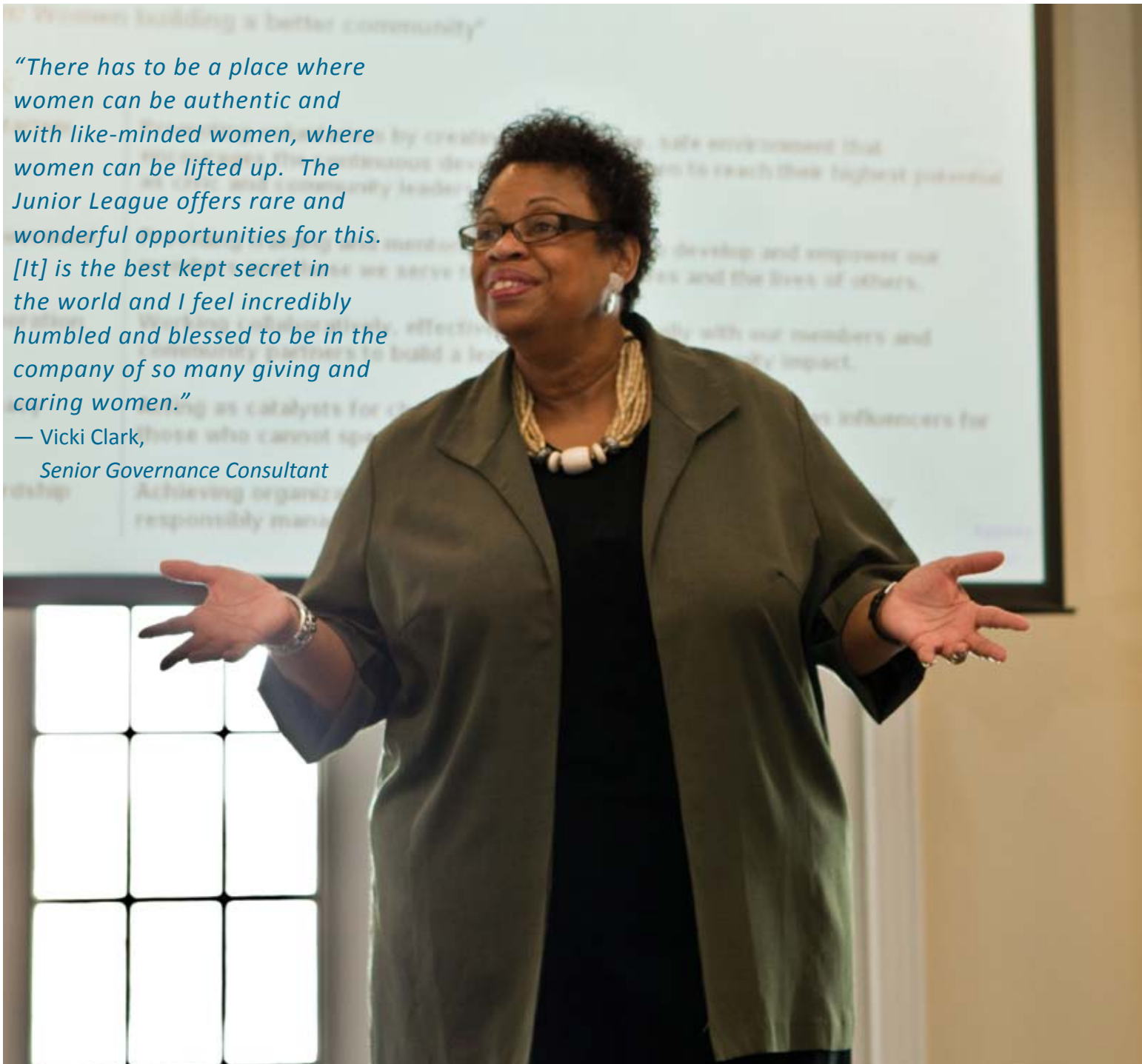
[www.wrightsgourmet.com](http://www.wrightsgourmet.com)

# men·tor [men-tawr, -ter] n.

1. a wise and trusted counselor or teacher.
2. an influential senior sponsor or supporter.

*“There has to be a place where women can be authentic and with like-minded women, where women can be lifted up. The Junior League offers rare and wonderful opportunities for this. [It] is the best kept secret in the world and I feel incredibly humbled and blessed to be in the company of so many giving and caring women.”*

— Vicki Clark,  
Senior Governance Consultant



Vicki Clark leads a training workshop at JLT headquarters for the Junior League Board of Directors.



## A Chat with the Editor:

by Angier Miller

*Vicki Clark, a Senior Governance Consultant with BoardSource and owner of her own consulting business, has an extensive background in various types of non-profit organizations. She is frequently employed by AJLI to provide training services to Junior League chapters throughout the world. I was fortunate enough to steal a few moments with Vicki as she was preparing for a couple of training sessions at our own League.*

### How did you get started on this path of training Junior League chapters?

I started working with Leagues in 2000. I was working with Points of Light prior to that for 12 years. 2000 was the Year of the Volunteer and the three partners for that were Points of Light, AJLI and United Nations Volunteers.

### What are some of the positive changes you've seen in Leagues throughout the country as a result of your workshops?

Leagues are microcosms of the world so when the world changes, the Leagues have to change in order to remain relevant. Now, Leagues are really following strategic plans and have become much more teamwork based rather than hierarchal.

### How many chapters do you train at each year?

So many that I can't keep track. I work with Leagues all over the U.S., in Canada and in London.

### Do you tailor your workshops to suit the chapter that you are mentoring or do all chapters get the same information/training?

I don't believe in canned presentations. A lot of the topics that I cover are similar, but the only way to be an effective trainer is to customize my presentation for a particular group [based on their needs]. I feel most strongly about this: the key to effective training is research up front; by the time I get to a group, I know as much about them as I can.

### Is there one piece of advice that you give to all League chapters, regardless of membership size?

Be Mission-Driven and Member-Focused. Stay focused on adding value to members lives. In order to change the community, you have to change the members.

### Where would you like to see the direction of Leagues' focus from a training perspective?

More informal and formal training, as well as more technology. I would like to see Leagues doing more evaluations. It is really important that Leagues be serious about measuring outcomes.

### What do you feel is the biggest challenge that faces League chapters today?

Everything changes so fast; women's lives are changing so fast. It is a challenge for women's volunteer groups to integrate all these changes. Also it is a "buyers market" for volunteers. In 1926, there weren't many places to get training and volunteers. Today, the League has to compete with other nonprofit and women's leadership organizations for volunteers.



Angier Miller has been a member of The Junior League of Tampa for eight years. Born in Richmond, Virginia, Angier graduated from Vanderbilt University and has her M.B.A. from The Fuqua School of Business at Duke University. Angier and her husband, Robert, live in South Tampa with their two English bulldogs, Lewis and George.

## Mentors: Guiding the Way

by Ashley Collado, Kathryn Hall and Brooke Iarossi

The Merriam-Webster Dictionary defines a mentor as a “trusted counselor or guide.” But to the women whose lives she helps shape, a mentor is much more than that. A mentor can provide a safe haven in a season of change. She shares her time and expertise to guide her mentee along the right path. The Junior League of Tampa is fortunate to have numerous members that selflessly fulfill these duties and more.

### PROVISIONAL MENTORS



Provisional Mentors.

We all remember the nerves and sheer excitement we felt leading up to our very first Junior League meeting. Once all of those initial emotions wear off, we suddenly realize that there are a vast amount of responsibilities and commitments to be made during our provisional year. With that being said, being a provisional can be overwhelming, thus our Provisional Mentors become our own personal guide and mentor, helping us begin our memorable journey into the League.

With our biggest provisional class yet (150 provisional members), the job of a Provisional Mentor is large and one that Caitlin Ralph is taking very seriously this year. “The Provisional Mentor position is one of the most important positions in the League. We are helping Provisionals make lifetime commitments to the League by giving them the knowledge of our Mission and helping them build relationships from the start.”

One of the steps Caitlin is taking to ensure that the new Provisionals become familiar with one another and the League is to focus on socializing with her group on a monthly basis and by reaching out to them weekly to answer any questions or concerns they may have.

The Provisional Mentors received additional training at the beginning of each League year via Vicki Clark, who was brought in to help them learn how to be better mentors. They will continue to receive training throughout the year to help them become proactive mentors. One thing that stuck with Caitlin from the training was that “someone else’s reality isn’t your reality, which ultimately helps me to better

relate to the Provisionals that I mentor.” There are also a number of first year Actives that are on the Provisional Mentor committee, which offers a recent perspective on things that may have been helpful for them just one year ago.

Membership will ultimately benefit from this position, by ensuring that our new members have the right support and guidance to enable them to have a successful partnership with the League. When Lynette Russell, Membership Vice President, was asked about the changes that the Membership Advisory Committee is making to the Provisional Mentor position she stated, “We are researching the Provisional Education curriculum and process right now. Some issues we are hoping to resolve are the manageability of large class size, the mentor/mentee ratio and the overall experience for the provisional member. We are exploring different options and will have more to come on that. At the very least, we will add mentors to accommodate the growing class size.”

### PLACEMENT MENTORS



Tiffany Harrington, Placement Mentor.

Once a woman is an active League member, her next big step is choosing her placement. As she enters her first year as a Placement Mentor with the League Tiffany Harrington’s goal is to, “Ensure lasting friendships and lend an ear for League members working in concert to build a better tomorrow for the community we live in.” Tiffany is joined by twenty-two other Placement Mentors, who will also be assisting League members to develop their personal League goals throughout the year.

“Each member brings a different strength and point of view to the League,” states Tiffany, “derived from each individual’s reason for joining and goals they wish to achieve.” As a Placement Mentor, she looks forward to finding out what the League means to its members in hopes of assisting with developing their connection with the League and with meeting their League goals.

JLT Placement Mentors plan on achieving success in their positions by actively involving themselves with their committees’ meetings and activities. “We want to build lasting friendships and ensure a long and rewarding League career,” says Tiffany. In addition to attendance at committee meetings and activities, Placement Mentors may be spotted interacting with League members at General Membership Meetings and at the Placement Fair. “We look forward to a successful, fulfilling and rewarding year for our committee members.”

Tiffany is honored to be a member of the Placement Committee. She hopes that members “are comfortable approaching their Placement Mentors with joys, concerns and sorrows. We want to make a difference in the League career of our members while helping them down the path of success and fulfillment. We are here as your friend, your mentor and your sounding board.”

### TRANSFER MENTORS



Britt Erekson, Transfer Chair

A third Mentor meets the special needs of members who transfer from other Leagues. Transfer Mentors help ease the transition for women new to the city and to The Junior League of Tampa. Laurel Lee, herself a former Transfer, entered the role of Transfer Mentor this year because of the positive impact that Transfer Mentors had on her. According to Laurel, Transfer Mentors “serve as a resource for the women throughout the year, providing information about the Tampa Bay area and the League.”

The Transfer Mentors equip women “with information about our League, our activities and our community,” Laurel continued. Transfer Chair Britt Erekson believes that the mentors themselves also are enriched by their work. She cites meeting new people and forming friendships with them as her favorite things about serving on the Transfer Committee. Transfer Mentors plan social events to help the Transfers forge relationships with each other, as well as other League members. Gatherings might include coffee dates, shopping trips or movie nights. Transfer Mentors and their mentees are matched according to common interests and lifestyles to spark natural connections.



Ashley Collado is from Tampa, Florida and has been a member of The Junior League of Tampa for three years. Ashley graduated from Stetson College of Law and currently practices in the area of Real Estate Law.



Brooke Iarossi is from Gulf Breeze, Florida and this is her first year as an active with The Junior League of Tampa. She and her husband Tom, have a two year old daughter Isabella. Brooke is the Southeast Regional Sales Manager for Gynecor, a division of Bostwick Laboratories.



Kathy Hall is from Middleburg, Florida and joined The Junior League of Tampa in 2010. She is a Facial Plastic and Reconstructive Surgeon with the University of South Florida. She and her husband, Eric, live in Tampa with their two year old son.

Integrating transfer members benefits not only the Transfers themselves, but also the League as a whole. Many Transfers have a wealth of ideas and experience to share with JLT members; some may have even served as leaders in their former League chapters. Mentors encourage Transfers to get involved in their new League, contributing with their diversity and insights.

Laurel suggests we can all serve as Transfer Mentors in a small, informal way. She encourages members to introduce themselves to the Transfers and welcome them to JLT. “Seeing a friendly face and feeling welcome and included in our meetings and events is a big part of ensuring the Transfers join and stay active. We should all try to meet someone new at membership meetings!” stated Laurel.

Whether instructing provisional members as they learn about the League, educating members about service opportunities or welcoming newcomers to Tampa, Mentors play a critical role in the League. Mentors share their time, knowledge and enthusiasm to strengthen individuals and the League as a whole, allowing us all to best serve the community. Mentors guide us all toward a brighter tomorrow.

“Each member brings a different strength and point of view to the League”

—Tiffany Harrington, Placement Mentor



# Mentoring: Better Service is Borne of the Best Relationships

by Megan Ely, Brooke Palmer and Ellen Quinlan

The skills in The Junior League of Tampa are meant to be shared with the community we serve as well as amongst each other. Everyone benefits from a good mentor and, with a new mentoring system put in place this year, the JLT encourages us to step out of our comfort zones and to take full advantage of an opportunity to grow. The League is a collection of extraordinary women, and the following interviews show how influential we can be. A common theme is how much more connected and comfortable one feels when someone takes an authentic interest in them. What is vitally important is that we are willing to do the work and make the effort to gain from those around us, and share with the talented women that surround us. Please read on to hear how the following mentoring relationships benefitted not only the mentors and the mentees, but those they serve as well.



**Mentor: Renee Dabbs Mentee: Jennifer Carslstedt**

Renee is a graduate of The University of Florida. Renee serves as The Victory Group, Inc.'s Chief Operating Officer, Senior Producer and Client Coordinator. Prior to The Victory Group, Renee led a \$220 million business; started corporate, political and nonprofit organizations from scratch; and served in senior management at Procter & Gamble for more than 15 years. She resides in Tampa with her husband, Brooks, and their two daughters.

Jen, former Junior League of Tampa President, has been Active in the League for 14 years. She grew up in Gainesville, Florida and received a Bachelor of Science and Master of Science from The University of Florida. Prior to staying home, her work experience included Marketing and Pharmaceutical Sales. She is married to Ed and they have three sons- Wilson (11), Nick (9) and Bryan (10 months).

## How did your mentorship begin?

**J** Renee and I are neighbors. About 10 years ago, I was contemplating my level of involvement with the League. Renee encouraged me to serve on her committee at the time, knowing that it would enhance my connection with the League.

## How has mentoring impacted your involvement within the League?

**R** I wanted to create an environment for women to be great. I believe that if you remind someone how great they are then they will ultimately exceed your expectations. When Jen considered leadership opportunities, it was her choice to step up, but I was there, regardless if it worked out or not, to see that Jen succeeded. Now as a Sustainer, I am more engaged in the League. Mentoring allows me to interact with current Actives, give advice and still feel connected to the League.

## How has your relationship with your mentor affected your placement selection?

**J** Renee encouraged me to go through the Willingness to Lead process. She knew my various leadership experiences at the University of Florida including President of Florida Blue Key and Kappa Alpha Theta would serve the League well.

## What advice would you offer to ensure a successful mentorship?

**J** Committee Chairs need to encourage and support their members with seeking out leadership opportunities. It is equally important for League members to ask for help and guidance from the leaders in the League. The majority of women I have had the pleasure of serving with thrive on helping other women achieve their best- so take advantage!

**R** I encourage everyone to stop and pay attention. Look around and see who is nourishing you. Getting to know one another and acting on your relationships will bring more to what you want to do in life. You may be in a totally different life place, but still benefit from the women you surround yourself with.



**Mentor: Kathleen Thaxton Mentee: Nicole Hubbard**

Kathleen was born in Philadelphia, Pennsylvania but has lived all over the US throughout her life. She has been in South Tampa 21 years. This is her 12<sup>th</sup> year in the League and 4<sup>th</sup> year on Executive Committee. Kathleen has been married for 18 years with three girls- Katy Ann (14), Laurel (12) and Jessica (8).

Nicole is from Winter Garden, Florida but has lived in South Tampa since 1998. This is her 6<sup>th</sup> year in the League. She has been married for 11 years with two children-Austin (3) and Ansley (1) as well as two Shih Tzus that are both 11 years old. She is a Nurse Anesthetist and has worked at Tampa General Hospital with Florida Gulf-to-Bay Anesthesiology for the last 8 1/2 years.

## How did your mentorship evolve?

**N** I didn't know Kathleen personally, but knew of her. She then became my Executive Liaison which initiated our friendship.

## What qualities about each other would you want to emulate?

**N** Kathleen absolutely understands balance in life. She knows that family comes first, and is so hands on yet at the same time is dedicated to JLT. She gets business done, but keeps the fun in it. It is a volunteer organization. We all might have different reasons for joining, but we all have the same goal. Kathleen understands that.

**K** I loved the way she treated her committee members and encouraged them to be creative. Nicole allowed her committee to do the job which best suited them. I admire her confidence in people as well as her incredible responsiveness.

## What is one of the best times you had together?

**K** One of my favorite times was when I knew Nicole was getting the Inspiring Leader of the Year Award! It was so hard not to tell her, but to surprise her with that award was awesome. And we have just as much fun sitting together at board meetings!



THE ASSOCIATION OF JUNIOR LEAGUES INTERNATIONAL, INC.  
Women building better communities®

The Association of Junior Leagues International, Inc. (AJLI) provides a thorough and comprehensive overview to Mentoring.

Visit [www.ajli.com](http://www.ajli.com) to learn more about the benefits of mentoring to mentors and mentees.

### A Mentor...

Is a teacher or advisor who leads through guidance and example.

### A Good Mentor...

Provides wise counsel and encourages the mentee to believe that her actions are a result of her own ideas and instincts.

### Mentoring Is...

- A relationship in which an experienced person provides advice, support, and encouragement to a less-experienced individual.
- A powerful personal development tool that enhances the abilities of both mentor and mentee.
- Valuable at any age. Everyone has something that she can teach someone else.
- Leadership development: The mentor offers skills, abilities and knowledge that build the next generation of leaders – a strategic element of organizational survival.

## MENTORING OUR MEMBERS

*Danielle is from Clearwater, Florida, and is a volunteer, wife and mother. Her current JLT placement is Fundraising Chair and she is in the beginning stages of launching her own event planning business.*

*Crystal was born in New Smyrna Beach, Florida, and attended The University of Florida and The University of Tampa. She is a volunteer, wife and mother and currently serves as JLT's Electronic Communications Chair.*

### How did you come to know your mentor?

**C** I met Danielle in my provisional class. Two years later we were Provisional Liaisons together. Soon after that I was a Placement Mentor on her committee (Kids Connect) while she was Chair.

### How has your mentorship impacted your League experience?

**D** Through my JLT training, I have learned that it is my responsibility to empower the women I serve with and to help strengthen their own leadership skills. Once I embraced that role, I learned to be a leader for the first time.

### In what ways has your mentorship affected your involvement in the League?

**C** We both put forth the time and effort to attend each other's events, socials and activities. It's great to see the benefits that abound when great women all around us work together.

### Do you recommend mentoring to active members?

**D** Yes! We have a new mentor training program that matches mentors with mentees based on a person's interests, fits and skills.



**Mentor: Danielle Post Mentee: Crystal Madani**

Healthy relationships are the key to any well functioning organization, and nowhere is that more evident than in the mentoring relationships of The Junior League of Tampa. Connecting current Actives with Sustainers and asking experienced Committee Chairs to help new members helps to create a rich culture of learning and communication that sharpens everyone's leadership skills. Like a family, we thrive in a wholesome and safe environment, where all of us are encouraged to take risks and grow. Creative and clear thinking enriches our community as we strive to help each other. Everyone is a winner as guiding principals are shared and learned skills are taught by a free flowing, efficient system of communication.



*Ellen Quinlan is from Tampa, Florida. She has been a member of the League for over a year. She is a graduate of Washington and Lee University and a recruiter for KForce Professional Staffing.*



*Megan Ely is a graduate of The University of Florida and the Fifth Avenue Club Assistant at Saks Fifth Avenue. She has been a member of the League for three years. She is also a dress designer, fashion consultant and a consultant for interiors.*



*Brooke Palmer is from Washington, D.C. and has been a member of the League for a year. She is an avid golfer, former collegiate lacrosse player, and a Vanderbilt University graduate. She is the president of R.S.B.P. Events, an event, public relations and wedding planning firm.*

{ proud sponsor of }

hope



dreams



& smiles

Celsius Marketing | Interactive is proud to be the marketing sponsor of The Junior League of Tampa's Holiday Gift Market since 2007.

Together we have helped The Junior League of Tampa's work of enriching our community in the areas of foster care, education and literacy, and basic needs for disadvantaged children.

**Creative  
Media Planning & Buying  
Web Design  
Print and Broadcast  
Production**

**celsius**<sup>o</sup>  
MARKETING | INTERACTIVE

**A Different Degree of Thinking**  
239.245.8674 | [celsiusmarketing.com](http://celsiusmarketing.com)



**NATHAN**  
*is a* **HISTORY-LOVING**  
**TENNIS-PLAYING**  
**100-YARD-DASHING, PLAY-WRITING**  
**ACTION-MOVIE-MAKING**  
**8TH GRADER at BERKELEY PREPARATORY SCHOOL**



4811 KELLY ROAD  
 TAMPA, FL 33615  
 813.885.1673

ADMISSIONS OPEN HOUSES

**Middle and Upper Divisions**  
 (Grades 6 to 12)  
 Wednesday, January 25, 9–11:30 am  
 Program begins promptly at 9 am  
 Jean Ann Cone Library

Please RSVP by January 23  
 to 813.885.1673 ext 2312  
 or email wardluc@berkeleyprep.org

**Find out more at**  
[www.berkeleyprep.org/openhouse](http://www.berkeleyprep.org/openhouse)

An independent day school for  
 boys and girls in Pre-K to Grade 12

3215 S MACDILL AVENUE, SUITE H  
 TAMPA, FLORIDA 33629  
 P 813.443.4984  
 TAMPA@BELLABRIDESMAID.COM



*Bella Bridesmaid*  
 A Collection For The Modern Bridesmaid  
[bellabridesmaid.com](http://bellabridesmaid.com)



The October book selection was *Promise Me* by Nancy Brinker, founder of the Komen for the Cure Foundation. The book discusses her relationship with her sister and her journey creating the Foundation. Darby Steadman of Driving Ms. Darby, a foundation that supports clinical trials in breast cancer research, spoke during the October book club event.

Another training opportunity this year is in conjunction with The Nonprofit Leadership Center of Tampa Bay. Two sessions will be offered focusing on the skills necessary to run a nonprofit business through training, coaching and online resources.



*Tiffanie Lopatin facilitates a resume workshop for Junior League members at Headquarters.*

## The Training Committee

by Meghan Weddle

The Junior League of Tampa offers many personal growth opportunities for its members from volunteering in the community to making new friends on committees and at social events. An additional benefit offered by the League is the opportunity to attend a variety of training events. According to Isabel Dewey, Training Committee Chair, these sessions are “monthly events that help League members grow personally and as volunteers.” In order to make training a priority within the League, training event attendance is a new requirement for the 2011 - 2012 League year.

The Training Committee facilitates many types of events to ensure that everyone finds something that suits her interests. One offering is a book club which has evolved from simple discussion groups to a speaker series about relevant topics pertaining to the chosen book. Dewey adds that, “people do not have to have read the books to attend, but they are encouraged to in order to get maximum benefit for the discussion.”

In addition to the book club and leadership training, the Training Committee started an informal mentorship program where “member mentors” are matched with “member mentees” based on their skills and interests. The goal of this program is to give people with interest in learning new skills the opportunity to be matched with someone who has those skill sets and is willing to share their knowledge.

Overall, the Training Committee always seeks to match its programs and events with League interests. The League uses surveys to gather information on relevant and pertinent topics. Using these results the Training Committee offers programs and events with the most membership appeal in an effort to help members grow in their League career and in their own personal pursuits.



*Meghan Weddle is from Chattanooga, Tennessee, and has been a member of the League for three years. Meghan is a graduate of Emory and has her M. Ed. from The University of South Florida. She is engaged to be married in July and teaches Middle Division History at Berkeley Preparatory School.*

# Simplify Your Life...

## By Calling An Exceptional Professional

Exceptional Professionals is a group of women who live, work and play right in your neighborhood. We've volunteered next to you, our children have played with and grown up with yours and we're passionate about what we do.

And we'd love to work with you so give us a call.



### Your Professional Success

#### Christina Boe



**Ultra Marketing Products**  
*Products and Apparel to Promote Your Business*  
 813.248.9000  
 cboe@ultrascreenprinting.com

#### Gail Frank



**Frankly Speaking – Resume Writer**  
*Free download: "The Job Hunter's Toolkit: What Do You Need To Get A Job?"*  
 www.callfranklyspeaking.com  
 813.506.8442 • gailfrank@post.harvard.edu

#### Jennifer Pauly Peterson



**jpcreations – Owner/Graphic Designer**  
*Creative Ideas Brought To Life*  
 www.jpcreations.me  
 813.653.9808  
 jennifer@jpcreations.me

#### Christy Atlas-Vogel



**MarketingDirection.com – President**  
*Your Part-Time Marketing Executive*  
 www.marketingdirection.com  
 813.526.1870  
 catlas-vogel@marketingdirection.com

### Your Health

#### Jan Cornelius, DDS



**Periodontic and Implant Dentistry**  
*Mention JLT for a free consult.*  
 www.DentallImplantCenter.net  
 813.254.4568  
 jcornel2@tampabay.rr.com

### Your Life

#### Kimberly Davis



**Arbonne International – Independent Consultant**  
*Swiss Skin Care, Weight Loss, Aromatherapy*  
 kimtodd.davis@verizon.net  
 813.767.5835

#### Ginny Vickers



**Color Me Mine – Co-Owner**  
*Paint-It-Yourself Pottery located in Hyde Park Village*  
 www.ColorMeMineTampa.com  
 813-258-8368

### Your Home

#### Nancy Blake



**Keller Williams Realty-Tampa Central – Realtor**  
*Specializing in S. Tampa & the Beaches, one relationship at a time.*  
 813.892.1688 cell  
 nblake@kw.com

#### Hannah D. Gross



**DAVISVENTURES Corporation**  
*Disaster Restoration and Construction Services*  
 www.davisventures.net  
 813.857.5292  
 hannah@davisventures.net

#### Clare Robbins



**Emerson Robbins Portraits Consultants**  
*Fine Art Portraiture*  
 3302 W. Bay to Bay Blvd. Ste. 102  
 813.831.2787  
 clare@emersonrobbinsportraits.com

#### Joellyn Rocha



**Joellyn Rocha Designs LLC**  
*Residential & Commercial Interior Decorating*  
*"Current Trends To Timeless Decor"*  
 813.902.8400  
 joellyn@jrochadesigns.com

#### Jennie Smith



**Jennie Smith Interiors (FL License #0001644)**  
*Full Service Residential & Commercial Interior Design*  
*Visit my shop for unique designer items.*  
 2713 S. MacDill Ave.-just N. of Bay to Bay Blvd.  
 813.839.7637

### Your Legal Concerns

#### Linda Courtney Clark



**Bankruptcy Attorney – Family, Civil and Criminal Law**  
*Protecting Your Rights With Integrity!*  
 www.lindacclarkpa.com  
 813.935.7755  
 lindacclarkpa@tampabay.rr.com

#### Kim Miller



**Account Executive – Universal Land Title**  
*Make sure your home purchase has clear title!*  
 kmiller@universallandtitle.com  
 813.230.0236 cell (Call for Title Quote!)

### Your Financial Concerns

#### Krista Allred



**FBC Mortgage LLC – Mortgage Lender**  
*When you have a mortgage question, just call. I make it easy.*  
*In House Underwriting and Rush Closings.*  
 813.766.3313 cell  
 kallred1@aol.com

#### Denise Cassedy



**Cassedy Financial Group**  
*401K & Investment Planning*  
*Let us help achieve your financial goals.*  
 813.251.0004 office  
 813.765.6061 cell

#### Jessica L. Kendall



**First Citrus Bank – Member FDIC**  
*Vice President/Branch Administrator and Security Officer*  
*Business and Personal Banking Services—Your Best Pick for Banking!*  
 jkendall@firstcitrus.com • www.firstcitrus.com  
 813.786.4421 cell

#### Laura Webb



**Webb Insurance Group – Independent Insurance Agent**  
*Representing Many National Companies*  
*For Home, Auto & Business*  
 www.webbinsurancegroup.com  
 813.887.5531

The group meets monthly for lunch to keep up-to-date with members. We welcome additional services not yet represented. Contact Exceptional Professionals and join us for lunch! Call Krista Allred at 813.269.4040.



*Ellis Anderson*



*Jacalin Ascough*



*Courtney Baker*



*Sarah Balmer*



*Jenna Bernaldo*



*Marny Bowman*



*Tammy Denbo*



*Katelyn Dervay*



*Maria Castellez-Dorazil*



*Allison Doucette*



*Beth Edwards*



*Victoria Ellingson*



*Jessica Burns*



*Lena Cabrera*



*Amy Cadicamo*



*Laura Campbell*



*Natalie Capone*



*Christin Carson*



*Jennifer Everett*



*Christina Everton*



*Meghan Fonte*



*Stefanie Ford*



*Jayme Futch*



*Meghan Gallagher*



*Rachel Cear*



*Tara Coakley*



*Stefanie Coren*



*Mary Beth Courier*



*Caroline Craig*



*Amber Crosby*



*Christina Garrido*



*Courtney Geoghegan*



*Amy Gallo-Gomez*



*Erin Grady*



*Kristina Granger*



*Erin Greco*



Danielle Groenen



Ana Grygo



Meghan Hacas



Caroline Harnden



Marie Hebler



Monica Helenek



Allison LaLonde



Jordan Land



Marcellie Lanoue



Erika Lee



Stephanie Leonard



Erika Lindsey



Elizabeth Helmer



Kirsten Higgins



Becky Ho



Lindsey Hodges



Michelle Huffmaster



Kelly Hughes



Frances Reed-Maclay



Melissa Madsen



Tara Mahtani



Margaret Mariani



Kimberly Marino



Danielle Marone



Kelly Moore-Hunt



Stacy Hyman



Betsy Isaak



Alison Jameson



Julie Johnston



Laura Kadechka



Kristin McClanahan



Elizabeth McCollum



Amber McDonnell



Shannon McQuown



Annette Messina



Toni Meyers



Puja Kalan



Kristin Karbowski



Kim Katzenbach



Tanya Kayani



Ashley Kerns



Dayton Kilburn



Marjory Miller



Janelle Miller



Cherie Monarch



Laurel Moynihan



Anne Myers



Angela Nidasio



Allison Kimball



Jane King



Elizabeth Knieriem



Jillian Koepke



Megan Koval



Heather Kutina



Michelle Owens



Melissa Palori



Lindsey Parks



Barbara Perez



Lauren Peterson



Molly Phillips



Kathryn Piazza



Heather Quinn



Charlseyy Reed



Lisa Reeves



Jill Reeves



Morgan Reid



Elizabeth Tarpein



Lucy Teague



Deeba Ternikar



Whitney Tizzano



Leslie Todd



Jessica Travis



Beth Roach



Kristin Rocha



Lauren Ross



Jenna Rowe



Monica Rudig-Hocking



Rinku Savdas



Shelby Tuttle



Michelle Vivacqua



Marni Weaver



Caitlin Weber



Patricia Weigel



Teneille Williams



Simone Savino



Jamie Schabacker



Jessica Schultheis



Katherin Scott



Joanna Segundo



Katie Selman



Loren Wilson



Jennifer Wooten



Sara Younger



Shana Zink



Camille Zutes

**Not pictured:**  
 Kerri Axelrod  
 Natalie Booth  
 Stacy Bush  
 Linda McDonald  
 Selena Ward



Avril Shelton



Catarina Showalter



Lea Simon



Nicole Sinardi



Amanda C. Smith



Amanda L. Smith



Elisha Snyder



Erin Sotiaux



Jenness Steele



Sara Stransky



Kristen Stutz



Donata Suplee

**PROVISIONAL EDUCATION COMMITTEE 2011 - 2012**

Suzy Mendelson  
 Chair

Katie Cappy  
 Assistant Chair

Jaime Brewer  
 Assistant Chair

Sarah Kodadek  
 Provisional Project Chair

Andrea Rottensteiner  
 Assistant Provisional Project Chair

*Provisional Mentors:*

Melissa Arment	Molly James
Roddy Belfatti	Caitlin Ralph
Megan Bock	Ellen Romano
Laura Fender	Mandy Valenti
Caroline Foss	Jamie Wood

*“The 2011 - 2012 Provisionals are an amazing group of women who share a common desire to improve the Tampa Bay Community through voluntarism. I am in awe of these ladies at every meeting. They are already so engaged and dedicated. These women are **lawyers, teachers, entrepreneurs, doctors, business executives, nonprofit board of directors members, stay at home moms and even Army Pilots!**”*  
 — Suzy Mendelson, Provisional Education Chair

The Junior League of Tampa would like to thank Nicole Geller Photography for the Provisional Member photos.



# Explore Hillsborough County Public Schools' Magnet Programs

**Application period for 2012-2013  
Opens December 5, 2011!**

## New Programs...

- Boys Preparatory Academy (Middle School 6-8)
- Girls Preparatory Academy (Middle School 6-8)
- Creative Science Centre (Lower Campus K-5 & Upper Campus 6-8)
- IB Middle Years Programme\*
- IB Primary Years and Middle Years Programme at K-8 School\* (\*Intent to apply for IB authorization)



To explore other options in Hillsborough County Public Schools, visit our website at [www.mysdhc.org/magnet](http://www.mysdhc.org/magnet) or call the Choice Information Line at 813-272-4692.



# US AmeriBank

Member FDIC

*Discover how we make banking better.*

Brandon | Carrollwood | Clearwater | Downtown Tampa  
Largo | South Tampa | St. Petersburg

[www.usameribank.com](http://www.usameribank.com)



*Occasions is proud to offer Patience Brewster!*



4009 Henderson Blvd.  
Tampa, FL 33629  
(813)286-9592

# SPECTRAWELLNESS

## FIND BALANCE.

BETWEEN TRADITIONAL MEDICINE  
& MODERN ALTERNATIVES

813.319.0911 [SPECTRAWELLNESS.COM](http://SPECTRAWELLNESS.COM)



LISA SAFF KOCHÉ M.D.

Are our services are right for you? Go online & take our health survey to find out!

**PRIMARY CARE • HOLISTIC MEDICINE • ANTI-AGING • WEIGHT LOSS**

## Fresh from our farm to your table.



USDA Certified  
Organic Produce



- Weekly Harvest Boxes available at convenient Tampa area locations
- Membership Discounts

# MAGNOLIA Organics

CERTIFIED ORGANIC PRODUCE

Logan Family Farm

352-588-3687  
Wesley Chapel, Florida  
[www.MagnoliaOrganics.net](http://www.MagnoliaOrganics.net)



A tradition of academic excellence and spiritual enrichment for over 60 years

Pre-K 4 through 8th grade



Call today for more information or a personal tour

813-870-3262

A 2011 National Blue Ribbon School



# CHRIST THE KING CATHOLIC SCHOOL

3809 Morrison Avenue • Tampa, Florida 33629  
[www.cks-school.org](http://www.cks-school.org)





Patrons' Party



photography by Joe Photo



**H**ello Sustainers! We have had a fabulous Fall with lots of activities and parties.

Back to the League Day was a great success. We learned what is going on in the League and got a firsthand look at the 50<sup>th</sup> anniversary edition of *The Gasparilla Cookbook* which not only has tried and true recipes, but also holds a special place in the history of The Junior League of Tampa. It is a fascinating read even if you don't like to cook. To purchase a copy visit [www.jltampa.org](http://www.jltampa.org) or call The Junior League of Tampa headquarters at 813.254.1734.

Lunch Bunch had a lively turnout thanks to our Chairs, Karen Perry and Flo Roberts. It is a fun way to see old friends and meet new ones. Watch for the next Lunch Bunch date in the Sustainer Sandblast, or call Karen or Flo.

The Holiday Gift Market Patrons' Party was another success story. Sustainer, June Annis, and her husband, Mike, opened their home for "C'est Magnifique," an Evening in Paris. It was truly magnificent. Thank you June and Mike for such a lovely evening.

Thank you to all of the Sustainers that have participated in the Annual Campaign this year. The Junior League of Tampa is unique in that every single cent of the money raised during Annual Campaign goes directly into our projects and programs. We are aiming for 100% participation from all of our members,

including Sustainers. So, if you have not already made a donation, we need you! You can mail a check to the League office, or go to our website at [www.jltampa.org](http://www.jltampa.org). It's not the size of your gift that matters, just the fact that you care enough to make the gift. We appreciate your participation at any level!

On another note, Carol Garner and Carolyn Corr chaired a fabulous Sustainer Cocktail Party at the beautiful golf course home of Frankie and Stan Harrell. The evening was perfect for dining under the stars, and Metro Chef Catering provided a wonderful array of gourmet dishes. A big "thank you" to Frankie and Stan for sharing their gracious home.

Our Food 4 Kids volunteer days were in November led by Sue Cox. Sue and her enthusiastic group of volunteers bagged groceries at Feeding America Tampa Bay and then distributed them to the children at the Belmont Heights and Sulphur Springs Boys and Girls Clubs. We will repeat this much needed service in the Spring, so if you'd like to participate, please call Sue.

I wish you and your families the happiest of holidays and send you many thanksgivings for all of our blessings.

Julie G. Sargent  
Sustainer President



Allison Burden, Frankie Harrell and Julie Sargent at the Sustainer Cocktail Party.



**SUSTAINER OFFICERS 2011 - 2012**

- Sustainer President**  
*Julie Sargent*
- Vice President / President Elect**  
*Sue Cox*
- Recording Secretary**  
*Paige Paine*
- Corresponding Secretary**  
*Bonnie Judy*

**Committee Chairs 2011 - 2012**

- Sustainer Chair**  
*Terri Parnell*
- Sustainer Assistant Chair**  
*Corey Poe*
- Sustainer President Assistants**  
*Nora Gunn and Shannon Polizzi*
- Fall Meeting**  
*Laura Ann Hunter*
- Fall Dinner**  
*Carol Garner and Carolyn Corr*
- Food 4 Kids**  
*Sue Cox*
- Bridge Group**  
*Ruth Tapley and Joanne Baldy*
- Art and Antiques and Trips**  
*Marsha Lane*
- Lunch Bunch**  
*Karen Perry and Flo Roberts*
- Day at the Races**  
*Pat Van Dyke*
- Sustainer Transfer Chairman**  
*Denise Cassidy*
- Spring Cocktail Buffet Chairmen**  
*Lora Hulse and Jeanne Dowdle*
- New Sustainers & Sustainer Transfers Luncheon**  
*Nadyne Hines*

**From Elementary School to Canterbury Tower... the Fun Continues!**



Rebecca Smith, Lucile Foster, Joy Bell  
(Canterbury Tower residents and friends for life)

A not for profit community

Edged by miles of beautiful Bayshore Boulevard  
Convenient to Performing Arts, fine dining and shopping  
Magnificent waterfront dining with chef-prepared cuisine  
Active Lifestyle in elegant surroundings  
Spacious residences that reflect your personal design  
Upscale amenities and services  
On-site distinguished skilled nursing facility  
An established community with a coveted Tampa address  
An intelligent decision  
A place to call home  
A way of life



**CANTERBURY TOWER**

Distinctive LifeCare Retirement

**SCHEDULE YOUR TOUR TODAY**

TELEPHONE OR ONLINE

813.917.0418 | [CanterburyTower.org](http://CanterburyTower.org) | 3501 Bayshore Boulevard

There are many retirement options. There is only one Canterbury Tower.

The **Pink Palm**  
BOUTIQUE

1532 S. Dale Mabry Hwy  
Open Monday-Saturday 10am-6pm  
[www.facebook.com/thepinkpalm](http://www.facebook.com/thepinkpalm)  
813-837-2304



Tampa Bay area's  
one and only

**Lily**  
PULITZER  
SIGNATURE STORE.

Free Gift Wrapping  
with Every Purchase!



**St. Mary's Episcopal Day School**  
**One Campus, One Family.** [www.smeds.org](http://www.smeds.org)



- Challenging Academics
- Foreign Language Instruction
- Video Production Activities
- Competitive Athletics
- Religious Education
- Exciting Enrichment Opportunities
- Performing and Visual Arts
- Advanced Technology

**2012-2013 Pre-Kindergarten Information Night**

Monday, December 5th at 7:00 p.m.

Please Call to Schedule a Personal Tour of the Campus!

2101 S. Hubert Ave., Tampa (813) 258-5508

Scott D. Laird, Headmaster  
Kathleen Lopez, Director of Admissions

The School admits students of any race, color, national or ethnic origin to all the rights, privileges, programs and activities generally accorded or made available to students of the School.

The perfect beach getaway!

*Just let go.*



Escape to the one resort with everything you need for the perfect beach getaway. From watersports to nightlife, from a soothing spa to a choice of 14 great restaurants, TradeWinds has what you need to "Just let go".

**TradeWinds**  
ISLAND RESORTS ON ST. PETE BEACH



Call 800.360.4017 or visit [JustLetGo.com](http://JustLetGo.com)

[eatfitlifefoods.com](http://eatfitlifefoods.com)  
**fitlife** foods  
Prepared meals to fuel people in their everyday lives  
*taste.*

**de-li-cious** [dih-lish-uhs]  
-adjective

1. highly pleasing to the senses, especially to taste or smell; like when eating our Feta Stuffed Chicken.
2. indulgently healthy.

**be fueled.**

813-644-6868

1902-B South Dale Mabry Hwy Tampa, FL 33629

**Mortgages Made Easy**

Purchase • Pre-Approval • Refinance • Renovation  
Conventional | FHA | VA | Jumbo



**Krista Allred**  
Mortgage Consultant  
NMLS #319001

Direct: 813.766.3313  
[kallred@FBCHomeLoans.com](mailto:kallred@FBCHomeLoans.com)

Visit me at [www.KristaAllred.com](http://www.KristaAllred.com)  
and find out why people like FBC Mortgage

**FBC**  
Mortgage LLC

Licensed Florida Mortgage Lender NMLS #152859

**DALE MABRY**  
**ANIMAL HOSPITAL**

*Caring for South Tampa pets for over 50 years!*

We see you and your pets at your convenience.  
Appointments necessary only for anesthetic procedures and boarding.

H. Leavengood, DVM - R. Moore, DVM - C. Cotten, DVM  
J. Garcia, VT



**DaleMabryAnimalHospital.com**

Online Pharmacy Home Delivery Medical Records Library

3606 S. Dale Mabry Hwy, Tampa

Tel: (813) 839-6191

# “The Hamwich”

## INGREDIENTS

- 3 tablespoons butter, melted
- 2 teaspoons mustard
- 2 teaspoons poppy seeds
- 1/3 cup chopped onion
- Dash of Worcestershire sauce
- 1 (16-ounce) package frozen dinner rolls
- 1/3 pound shaved ham
- 2/3 cup shredded Swiss cheese

Preheat the oven to 350 degrees. Mix the butter, mustard, poppy seeds, onion and Worcestershire sauce in a bowl. Remove the rolls in one piece from the foil pan and cut into halves horizontally. Replace the bottom half in the foil pan and spread evenly with the poppy seed mixture. Layer the ham and cheese over the bottom half of the rolls. Replace the top half of the rolls cut side down over the cheese. Cut into individual servings. Bake for 20 to 25 minutes or until light brown. The rolls may be frozen before baking.

*Capture the Coast Cookbook p. 40*



## The Junior League of Tampa 2011 – 2012 Cookbook Order Form

In celebration of the 50<sup>th</sup> anniversary of *The Gasparilla Cookbook*, The Junior League of Tampa is excited to announce the publication of this very special edition. ***The Gasparilla Cookbook 50<sup>th</sup> Anniversary Edition has arrived!*** Don't miss this unique opportunity to own a commemorative edition of Tampa's culinary history.

Name: \_\_\_\_\_  Active  Sustainer  
 Address: \_\_\_\_\_ Phone: \_\_\_\_\_  
 City/State/Zip: \_\_\_\_\_ Email: \_\_\_\_\_

ORDER DETAILS			
TITLE	QUANTITY	PRICE EACH	AMOUNT
<i>The Gasparilla Cookbook 50<sup>th</sup> Anniversary Edition</i>	_____	\$ 14.95	_____
<i>Tampa Treasures</i>	_____	\$ 19.95	_____
<i>The Culinary Collection Volume 4: Capture the Coast</i>	_____	\$ 21.95	_____
<i>The Culinary Collection Volume 3: Savor the Seasons</i>	_____	\$ 21.95	_____
<i>The Culinary Collection Volume 2: Everyday Feasts</i>	_____	\$ 21.95	_____
<i>The Culinary Collection Volume 1: The Life of the Party</i>	_____	\$ 21.95	_____
<i>The Complete Culinary Collection (all 4 volumes)</i>	_____	\$ 60.00	_____
		<i>Subtotal:</i>	_____
		<i>Add 7% FL Sales Tax:</i>	_____
		<b><i>Total:</i></b>	_____

## PAYMENT METHOD

Check (Payable to The Junior League of Tampa)  
 Visa  M/C Card #: \_\_\_\_\_ Exp Date: \_\_\_\_\_  
 Name on Card: \_\_\_\_\_ Security Code: \_\_\_\_\_

Please send order with check or credit card information to: The Junior League of Tampa, 87 Columbia Drive, Tampa, FL 33606  
 Order by phone: 813.254.1734 ext. 2 Fax your order to: 813.254.9593 Order online at: [www.JLTampa.org](http://www.JLTampa.org)  
 For shipping information contact: [cookbook@jlthq.com](mailto:cookbook@jlthq.com)



# THE JUNIOR LEAGUE OF TAMPA

## 2011-2012 ANNUAL CAMPAIGN

### DONOR COMMITMENT FORM

#### DONOR INFORMATION

Donor Recognition Name: \_\_\_\_\_  
(as it will appear on donor recognition)

Donor Mailing Name / Company Name: \_\_\_\_\_

Mailing Address: \_\_\_\_\_

City: \_\_\_\_\_ State: \_\_\_\_\_ Zip: \_\_\_\_\_

Home Phone: ( ) \_\_\_\_\_ Cell Phone: ( ) \_\_\_\_\_ Email: \_\_\_\_\_

**YES!** I would like to support The Junior League of Tampa's community projects & training programs.

Please accept my annual gift at the following level:

- Platinum Sponsor - \$10,000     Patron - \$1,000     Supporter (\$20-249) –  
 Silver Sponsor - \$5,000         Contributor - \$500        \$ \_\_\_\_\_  
 Bronze Sponsor - \$2,500        Friend - \$250

#### DONOR BENEFITS

PLEASE NOTE: Multi-year donors will be designated on recognition lists as follows - ◆ = 2-4 yrs; ◆◆ = 5-9 yrs; ◆◆◆ = > 10 yrs	PLATINUM \$10,000	SILVER \$5,000	BRONZE \$2,500	PATRON \$1,000	CONTRIBUTOR \$500	FRIEND \$250	SUPPORTER \$20 - \$249
Recognition in <i>The Sandspur</i> quarterly magazine (through Summer 2012)	√	√	√	√	√	√	√
Recognition in <i>Spur of the Moment</i> monthly newsletter (through May 2012)	√	√	√	√	√	√	
Recognition on The Junior League of Tampa website (through June 2012)	√	√	√	√	√	√	√
Recognition on Donor Board (at Patrons' Party, Holiday Gift Market, HGM Kickoff Party)	√	√	√	√	√	√	
Recognition in additional promotional materials and advertising	Select	Select	Select				
Logo and Link on The Junior League of Tampa website (through June 2012)	√	√	√				
Special signage at Holiday Gift Market	√	√	√				
Inclusion in Holiday Gift Market guide	√	√	√				
Inclusion in the <i>St. Pete Times</i> thank you ad	√	√					
Tickets to Patrons' Party (Oct. 20 at the home of Sustainer June Annis)	8	6	4	2			
Tickets to Holiday Gift Market Kickoff Party (Nov 3rd at Florida State Fairgrounds)	12	8	4	1	1	1	
General admission tickets to Holiday Gift Market (Nov 4-6 at Florida State Fairgrounds)	30	25	20	15	15		

#### PAYMENT OPTIONS

You may donate ONLINE @ [www.jltampa.org](http://www.jltampa.org) –OR– Please select a payment option below, then sign and return this form to:  
 Allison Barnes Burden 2011-2012 President, The Junior League of Tampa, 87 Columbia Dr., Tampa, FL 33606. Fax: 813-254-9593  
 NOTE: To receive Holiday Gift Market benefits (as listed), all payments must be made by November 1, 2011, except Contributors' Plan.

- My CHECK is enclosed (Payable to The Junior League of Tampa): \$ \_\_\_\_\_ Check #: \_\_\_\_\_  
 I would like to participate in the CONTRIBUTORS' PLAN – by making equal monthly payment through March 2012.  
(NOTE: For Gifts of \$250 or above only. Please obtain contributors form at [www.jltampa.org](http://www.jltampa.org) & submit with a voided check)  
 I would like to utilize my / spouse's COMPANY MATCH gift program towards my gift to The Junior League of Tampa.  
 My Gift: \$ \_\_\_\_\_ Matching Gift: \$ \_\_\_\_\_ Company Name: \_\_\_\_\_  
 I would like to make a gift of APPRECIATED SECURITIES. Please send me wire transfer information.  
 Please charge my CREDIT CARD: \$ \_\_\_\_\_ Name on Card: \_\_\_\_\_  
 VISA or MASTERCARD #: \_\_\_\_\_ Exp Date: \_\_\_\_\_ Security Code: \_\_\_\_\_  
 Signature: \_\_\_\_\_ Date: \_\_\_\_\_

# Stop shaving.

Mention this ad and receive:  
**20% OFF\***

The purchase of any laser hair removal package.

\*Not to be combined with any other offers or discounts. Valid only with the all inclusive pricing program at participating locations. Limit one per Guest. Offer expires December 31, 2011.

## IDEAL IMAGE

LASER HAIR REMOVAL

One Divine Place  
 1602 Oakfield Dr | Suite 105-107  
 Brandon, FL 33511

**1-800 BE-IDEAL**  
[www.idealimage.com](http://www.idealimage.com)

Call today to schedule your complimentary consultation!



1308 S. Dale Mabry Hwy. Tampa, FL 33629 (813) 205-1841 [www.jcsboutique.com](http://www.jcsboutique.com)  
**JCS BOUTIQUE**  
 and Alterations

[www.cheesepleasetampa.com](http://www.cheesepleasetampa.com)

# Cheese Please

**4213 S. Manhattan Ave. Tampa**  
*(located in the courtyard of Pondscapes)*  
**813-855-BRIE**

The largest selection of European cheeses

Specialty wines and artisanal beers

Gift Certificates and Baskets perfect for the holidays

To-go trays for your next sports event party

Check our "Cheese and Wine Bar" with cheese flights



OUT AND ABOUT: COMMUNITY



Kids in the Kitchen



Connected by 25



OUT AND ABOUT: COMMUNITY



photography by Heather Hamilton



Luiza Torra with Torra Photography



## The Junior League of Tampa

Nonprofit Organization

Wall

The Junior League of Tampa



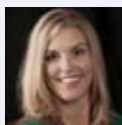
### The Junior League of Tampa

The *Sandspur* Committee invites fellow League members to respond to our most relevant topics and burning questions. Share your responses by leaving a comment under the question below. Please note the selected respondent(s) will have their photo and quote published in an upcoming issue of *The Sandspur*.

#### Who has been a League mentor to you and what did you learn from her?

September 20 at 12:10pm

2 people like this



**Shannon Walsh** It is so hard to narrow it down to just one person... but Lisa Lockhart has been instrumental in my League experience. I admire her for her involvement and managing such a busy schedule (between serving on the JLT executive committee, work, school and personal life). She always makes time to answer my questions, help with an event or just grab a glass of wine & catch up. I aspire to do that for others! October 3 at 4:38pm Like 3 people



**Andrea Bridenback Layne** I am lucky to call Betsy Graham not only my mentor, but also my friend. She has thoughtful and thought-provoking advice that is always insightful and on target. She has taught me to not dwell on the mistakes, but take initiative to fix the core issue. I admire her poise and I trust her guidance. October 3 at 5:51pm Like 3 people



**Suzy Hays Mendelson** Stephanie Hendrix Wiendl has shown me that it is not only possible, but completely do-able to be a fully engaged mother, a full time working woman, and a devoted volunteer and League member, all at the same time! She is a big picture gal, while being able to focus on others individual league experience. She has taught me to find balance in all of my roles and how to be devoted to each one separately. October 3 at 9:18pm Like 2 people



**Jennifer Moyer** Jennie Sober is one of my mentors. She believed in me early in my League career and encouraged me to think big. She exudes such a caring attitude to all of her committee members that I can only hope to emulate. October 3 at 10:23pm Like 1 person



**Nicole Perez Geller** Lynette Russell is my mentor. She is polished, patient and perfect. The three P's of an amazing leader! Lynette truly makes me feel like I can accomplish my goals within the league. Although Lynette has a full plate, I never feel as if my concerns/ issues are not being addressed. Thank you Lynette for inspiring me to be my best!

October 5 at 5:43am Like 3 people

Social media is the new frontier for nonprofits. The Junior League of Tampa uses Facebook and Twitter to highlight our accomplishments and interact with our members and supporters. Since JLT launched our Facebook page in 2009, we have accumulated over 750 fans.

**Please help us to get to 1000 fans by the end of 2011**

Suggest our page to your friends and family and feel free to comment on our status updates, pictures, and links. You never know when your comment may show up on a future edition of *The Sandspur*!

<http://www.facebook.com/TheJuniorLeagueofTampa>

Facebook® is a registered trademark of Facebook Inc.

# You Told Us... Privacy Is Important to You



Privacy is important when you are having a baby, a diagnostic procedure or surgery. Our Women's Tower suites were purposefully designed to maximize privacy for all your health care needs.

#### Tower amenities include:

- All private suites with overnight accommodations for families
- Obstetrics, gynecology and women's surgical procedures all in one location
- Individualized environment for newborn's growth and development
- Wireless communications and Internet access
- All-digital diagnostic imaging services
- Easy registration/admitting with biometric palm scanning

For a physician referral or more information:  
**(813) 402-2358**

**St. Joseph's Women's Hospital**  
BayCare Health System



Let the **mirror**  
reflect your **success!**

**Lose** up to **5-10 pounds** the first week  
and up to **20 pounds** the first month!<sup>†</sup>

**Medi-Weightloss Clinics®** is a physician-supervised, three-phase weight loss program **that works**. Our Wellness Team gives you the support, education, and tools you need to help you lose weight and **keep it off**.<sup>†</sup> Our program will:

- Provide weekly support, encouragement, and motivation
- Educate you on how to lose weight using real food
- Give you recipes, shopping lists, and guidance for dining out
- Teach you how to win the weight loss battle

**CALL TO MAKE YOUR APPOINTMENT TODAY!**



**Medi-Weightloss Clinics®**

4039 W. Kennedy Ave., Tampa, FL

**813.281.0500**

**LUTZ 813.909.1700**

**TAMPA 813.281.0500**

**BRANDON 813.654.1110**

**1.877.MED.LOSS | www.mediweightlossclinics.com**

**\$50**  
**OFF**  
YOUR INITIAL  
CONSULTATION

EXPIRES: 01/31/2012



<sup>†</sup>On average, Medi-Weightloss Clinics® patients lose 7 pounds the first week and 2 to 3 pounds each week thereafter for the first month. Rapid weight loss may be associated with certain medical conditions and should only be considered by those who are medically appropriate. THE PATIENT AND ANY OTHER PERSON RESPONSIBLE FOR PAYMENT HAS A RIGHT TO REFUSE TO PAY, CANCEL PAYMENT, OR BE REIMBURSED FOR PAYMENT FOR ANY OTHER SERVICE, EXAMINATION, OR TREATMENT THAT IS PERFORMED AS A RESULT OF AND WITHIN 72 HOURS OF RESPONDING TO THE ADVERTISEMENT FOR THE FREE, DISCOUNTED FEE, OR REDUCED FEE SERVICE, EXAMINATION OR TREATMENT.  
© 2011 Medi IP, LLC. All Rights Reserved.